



Manage Alarms

This chapter provides procedures required to view and manage Cisco ONS 15600 alarms and conditions.

Cisco Transport Controller (CTC) detects and reports SONET alarms generated by the ONS 15600 and the larger SONET network. You can use CTC to monitor and manage alarms at a card, node, or network level. Default alarm severities conform to the Telcordia GR-253 standard, but you can reset severities to customized alarm profiles or suppress CTC alarm reporting. For alarm troubleshooting information, refer to the *Cisco ONS 15600 Troubleshooting Guide*.

Before You Begin

This section lists the chapter procedures (NTPs). Turn to a procedure for applicable tasks (DLPs).

1. [NTP-E57 Document Existing Provisioning, page 8-2](#)—Complete this procedure before performing any other procedures in this chapter.
2. [NTP-E42 View Alarms, Alarm History, Events, and Conditions, page 8-2](#)—Complete as needed.
3. [NTP-E108 Enable, Modify, or Disable Alarm Severity Filtering, page 8-3](#)—Complete as needed.
4. [NTP-E43 Synchronize Alarms, page 8-3](#)—Complete as needed.
5. [NTP-E44 Delete Cleared Alarms from the Display, page 8-4](#)—Complete as needed.
6. [NTP-E45 View Alarm-Affected Circuits, page 8-5](#)—Complete as needed.
7. [NTP-E46 Create, Assign, and Delete Alarm Severity Profiles, page 8-6](#)—As needed, complete these tasks to change the default severity for certain alarms, to assign the new severities to a port, card, or node, and to delete alarm profiles.
8. [NTP-E47 Suppress and Restore Alarm Reporting, page 8-7](#)—As needed, complete these tasks to suppress reported alarms at the port, card, or node level and to disable the suppress command to resume normal alarm reporting.

NTP-E57 Document Existing Provisioning

Purpose	This procedure records, copies, prints, and exports CTC information.
Tools/Equipment	A printer must be connected to the CTC computer.
Prerequisite Procedures	Chapter 4, “Turn Up Node”
Required/As needed	As needed
Onsite/Remote	Onsite or remote
Security Level	Retrieve or higher

-
- Step 1** Complete the [“DLP-E26 Log into CTC” task on page 16-39](#) at the node with the information where you want to record, print, or export. If you are already logged in, continue with Step 2.
- Step 2** As needed, manually record CTC information (typically to document existing provisioning before upgrading or troubleshooting).
- Step 3** As needed, you can copy and paste CTC text into other applications using the Microsoft Windows Copy (Ctrl+C), Cut (Ctrl+X), and Paste (Ctrl+V) commands.
- Step 4** If you want to print information within a single tab, complete the [“DLP-E214 Print CTC Data” task on page 18-18](#).
- Step 5** If you want to save information to a word processing application such as a spreadsheet, complete the [“DLP-E265 Export CTC Data” task on page 18-84](#).

Stop. You have completed this procedure.

NTP-E42 View Alarms, Alarm History, Events, and Conditions

Purpose	Use this procedure to view ONS 15600 alarms at the card, node, or network level; view the alarm history for cleared and uncleared alarms; and view conditions at the card, node, or network level.
Tools/Equipment	None
Prerequisite Procedures	None
Required/As Needed	As needed
Onsite/Remote	Onsite or remote
Security Level	Retrieve or higher

-
- Step 1** Complete the [“DLP-E26 Log into CTC” task on page 16-39](#). If you are already logged in, continue with Step 2.
- Step 2** Complete the [“DLP-E43 View Alarms” task on page 16-58](#) to review alarms for the current session.
- Step 3** Troubleshoot the alarms using the *Cisco ONS 15600 Troubleshooting Guide*.
- Step 4** Complete the [“DLP-E44 View Alarm History” task on page 16-59](#) or the [“DLP-E45 View Conditions” task on page 16-61](#) as needed.
- Step 5** Complete the [“DLP-E46 Display Events Using Each Node’s Time Zone” task on page 16-63](#) as needed.

Stop. You have completed this procedure.

NTP-E108 Enable, Modify, or Disable Alarm Severity Filtering

Purpose	This procedure starts, stops, or changes alarm filtering for one or more severities in the Alarms, Conditions, and History windows in all network nodes.
Tools/Equipment	None
Prerequisite Procedures	None
Required/As Needed	As needed
Onsite/Remote	Onsite or remote
Security Level	Retrieve or higher

- Step 1** Complete the “[DLP-E26 Log into CTC](#)” task on page 16-39 at the node where you want to enable, modify, or disable alarm filtering. If you are already logged in, continue with [Step 2](#).
- Step 2** As necessary, complete the “[DLP-E155 Enable Alarm Filtering](#)” task on page 17-43. This task enables alarm filtering at the card, node, and network views for all nodes in the network. Alarm filtering can be enabled for alarms, conditions, or events.
- Step 3** As necessary, complete the “[DLP-E156 Modify Alarm and Condition Filtering Parameters](#)” task on page 17-45 to modify the alarm filtering for network nodes to show or hide particular alarms or conditions.
- Step 4** As necessary, complete the “[DLP-E157 Disable Alarm Filtering](#)” task on page 17-46 to disable alarm profile filtering for all network nodes.

Stop. You have completed this procedure.

NTP-E43 Synchronize Alarms

Purpose	This procedure manually refreshes the CTC alarm display in the card, node, or network view so that it is aligned with the most current ONS 15600 alarms.
Tools/Equipment	None
Prerequisite Procedures	None
Required/As Needed	As needed
Onsite/Remote	Onsite or remote
Security Level	Retrieve or higher

- Step 1** Complete the “[DLP-E26 Log into CTC](#)” task on page 16-39. If you are already logged in, continue with [Step 2](#).
- Step 2** Click the **Alarms** tab in the node view, card view, or network view.

Step 3 Click **Synchronize**.



Note Alarms that have been raised during the session will have a check mark in the Alarms window New column. When you click Synchronize, the check mark disappears.

Although CTC displays alarms and events in real time, the Synchronize button allows you to verify the alarm display. This is particularly useful during provisioning or troubleshooting.

Stop. You have completed this procedure.

NTP-E44 Delete Cleared Alarms from the Display

Purpose	This procedure deletes Cleared (C) status ONS 15600 alarms from the alarms window. This procedure can be used to delete transient messages from the CTC History window.
Tools/Equipment	None
Prerequisite procedures	None
Required/As needed	As needed
Onsite/Remote	Onsite or remote
Security Level	Retrieve or higher

Step 1 Complete the “[DLP-E26 Log into CTC](#)” task on page 16-39. If you are already logged in, continue with Step 2.

Step 2 Click the **Alarms** tab and then click **Delete Cleared Alarms** to delete node-level alarms.

This action will remove any cleared ONS 15600 alarms from the Alarms display. The rows of cleared alarms appear white and their status is C.

Step 3 To delete the cleared alarms for one card at one node:

- a. In node view, double-click the card graphic for the card you want to open.
- b. Click the **Alarms** tab and then click **Delete Cleared Alarms**.

Step 4 To delete the cleared alarms for all the nodes in a network:

- a. From the View menu, choose **Go to Network View**.
- b. Click the **Alarms** tab and then click **Delete Cleared Alarms**.

Stop. You have completed this procedure.

NTP-E45 View Alarm-Affected Circuits

Purpose	This procedure displays ONS 15600 circuits that are affected by a specific alarm.
Tools/Equipment	None
Prerequisite Procedures	Chapter 6, “Create Circuits”
Required/As Needed	As needed
Onsite/Remote	Onsite or remote
Security Level	Retrieve or higher

- Step 1** Complete the “[DLP-E26 Log into CTC](#)” task on page 16-39. If you are already logged in, go to Step 2.
- Step 2** Click the **Alarms** or **Conditions** tab and then right-click anywhere on the row of an active alarm or condition.



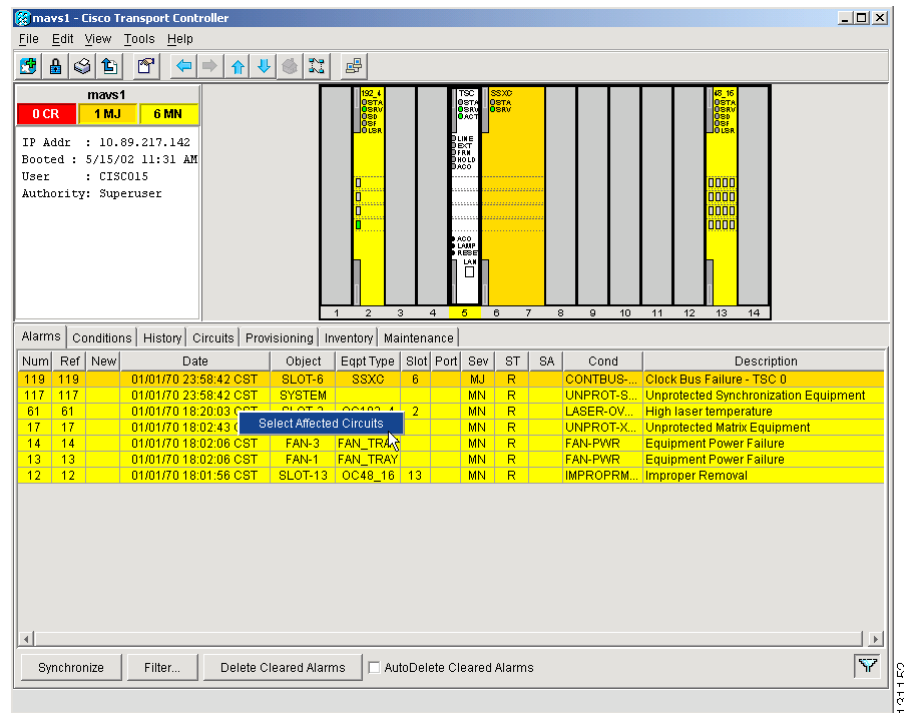
Note The node view is the default, but you can also navigate to the Alarms tab in the network view or card view to perform Step 2.



Note The card view is not available for the Timing and Shelf Controller (TSC) or Single Shelf Cross-Connect (SSXC) cards.

The Select Affected Circuit option shortcut menu appears ([Figure 8-1](#)).

Figure 8-1 Selecting the Affected Circuits Shortcut Menu

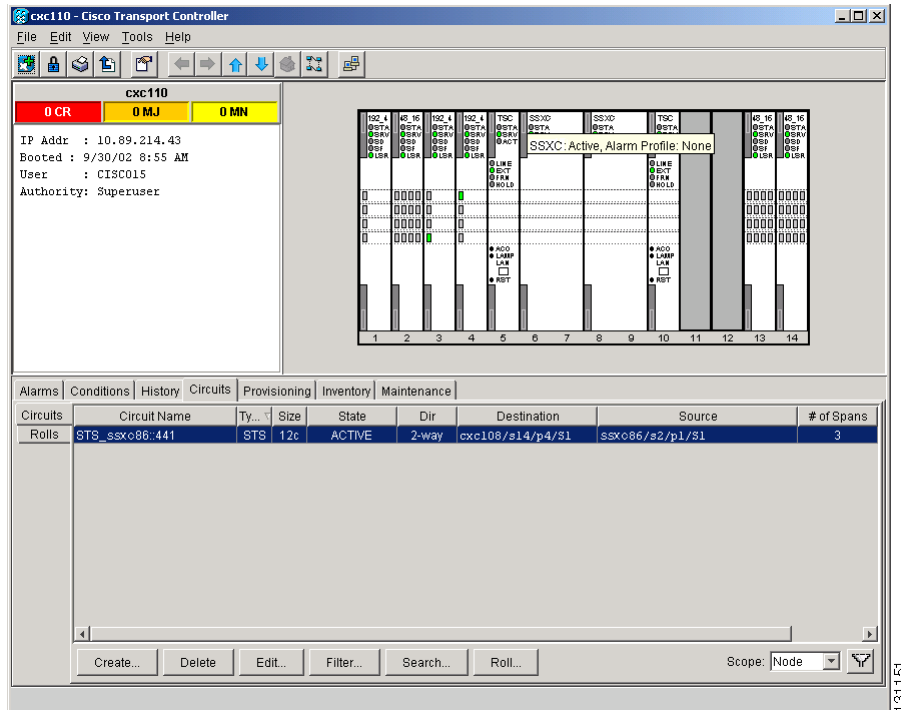


131152

Step 3 Click **Select Affected Circuits**.

The Circuits window appears with affected circuits highlighted (Figure 8-2).

Figure 8-2 Affected Circuit Appears for Alarm



Stop. You have completed this procedure.

NTP-E46 Create, Assign, and Delete Alarm Severity Profiles

Purpose	This procedure changes the default severity for certain alarms (or creates, assigns, or deletes an alarm profile).
Tools/Equipment	None
Prerequisite Procedures	None
Required/As Needed	As needed
Onsite/Remote	Onsite or remote
Security Level	Provisioning or higher

Step 1 Complete the “DLP-E26 Log into CTC” task on page 16-39. If you are already logged in, continue with Step 2.

Step 2 Complete the “DLP-E48 Create Alarm Severity Profiles” task on page 16-63 to clone a current alarm profile, rename it, and customize the new profile.

- Step 3** As necessary, complete the “[DLP-E49 Apply Alarm Profiles for Ports and Cards](#)” task on page 16-66 or the “[DLP-E50 Apply Alarm Profiles to Cards and Nodes](#)” task on page 16-68.



Note Both of these tasks can also be used to assign alarm profiles for particular cards.

- Step 4** As necessary, complete the “[DLP-E154 Delete Alarm Severity Profiles](#)” task on page 17-42.
Stop. You have completed this procedure.

NTP-E47 Suppress and Restore Alarm Reporting

Purpose	This procedure prevents alarms from being reported on ONS 15600 ports, cards, or nodes when an alarm or condition exists but you do not want it to appear. Also use this procedure to discontinue alarm suppression.
Tools/Equipment	None
Prerequisite Procedures	None
Required/As Needed	As needed
Onsite/Remote	Onsite or remote
Security Level	Provisioning or higher

- Step 1** Complete the “[DLP-E26 Log into CTC](#)” task on page 16-39. If you are already logged in, continue with Step 2.
- Step 2** Complete the “[DLP-E51 Suppress Alarm Reporting](#)” task on page 16-68 to provision the node to send out autonomous messages to clear any raised alarms.
- Step 3** Complete the “[DLP-E52 Restore Alarm Reporting](#)” task on page 16-70 to remove the suppress-alarms command and provision the node to send out autonomous messages to raise any actively suppressed alarms.

Stop. You have completed this procedure.

