



Error Messages

This chapter lists the ONS 15454 error messages. Error message numbering is a new feature in Release 4.6. [Table 4-1](#) gives a list of all error message numbers, the messages, and a brief description of each message.



Note

The terms "Unidirectional Path Switched Ring" and "UPSR" may appear in Cisco literature. These terms do not refer to using Cisco ONS 15xxx products in a unidirectional path switched ring configuration. Rather, these terms, as well as "Path Protected Mesh Network" and "PPMN," refer generally to Cisco's path protection feature, which may be used in any topological network configuration. Cisco does not recommend using its path protection feature in any particular topological network configuration.

The error dialog box in [Figure 4-1](#) consists of three parts: the error title, error ID, and the error message.

Figure 4-1 Error Dialog Box

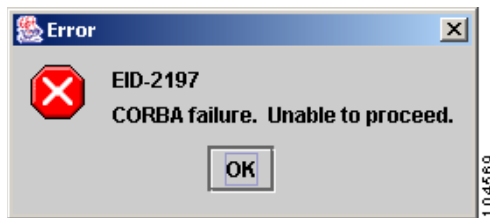


Table 4-1 Error Messages

Error ID	Error Message	Description
EID-0000	Invalid Error ID.	The error ID is invalid.
EID-0001	Null pointer encountered in {0}.	Cisco Transport Controller (CTC) encountered a null pointer in the area described by the specified item.
EID-1000	The host name of the network element cannot be resolved to an address.	Refer to error message text.
EID-1001	Unable to launch CTC due to applet security restrictions. Please review the installation instructions to make sure that the CTC launcher is given the permissions it needs. Note that you must exit and re-start your browser in order for the new permissions to take effect.	Refer to error message text.

Table 4-1 Error Messages (continued)

Error ID	Error Message	Description
EID-1002	The host name (e.g., for the network element) was successfully resolved to its address, but no route can be found through the network to reach the address.	Refer to error message text.
EID-1003	General exception. {0}	Unexpected exception/error while launching CTC from the applet. Failed to rollback card provisioning while cancelling a span upgrade. Unexpected error while assigning east or west protect port of a bidirectional line switched ring (BLSR).
EID-1004	Problem Deleting CTC Cache: {0} {1}	CTC encountered a problem deleting the cache.
EID-1005	IOException writing batch file to launch CTC.	CTC could not write the launching batch file.
EID-1006	Malformed URL trying to download LAUNCHER.jar.	The URL used to download the Launcher.jar file is malformed.
EID-1007	IO Exception trying to download LAUNCHER.jar.	An input/output exception was encountered when CTC tried to download the GUI launcher.
EID-1008	Malformed URL trying to download ORB.	The URL used to download the ORB.jar file is malformed.
EID-1009	IO Exception trying to download ORB.	There was a problem trying to download the ORB.jar file. It has not been downloaded.
EID-1010	Alias Exists.	The alias already exists.
EID-1011	KeyStoreException	CTC encountered a keystore exception trying to complete this task.
EID-1012	Can not find file. FileNotFoundException	The file could not be found.
EID-1013	IOException	CTC encountered an input/output exception.
EID-1014	NoSuchAlgorithmException	The algorithm does not exist.
EID-1015	CertificateException	CTC encountered a certificate exception.
EID-1016	Null Keystore	CTC encountered a null keystore while trying to complete this task.
EID-1017	The policy file was not changed due to an error writing the {0} file.	The policy file was not changed due to an error writing the specified file.
EID-1018	Password must contain at least 1 alphabetic, 1 numeric, and 1 special character (+, # or %). Password shall not contain the associated user-ID	The password is invalid.
EID-1019	Could not create {0}. Please enter another filename to save file as.	CTC could not create the file due to an invalid filename.

Table 4-1 Error Messages (continued)

Error ID	Error Message	Description
EID-1020	Fatal exception occurred, exiting CTC. Unable to switch to the Network view.	CTC was unable to switch from the node or card view to the network view, and is now shutting down.
EID-1021	Unable to navigate to {0}.	Failed to display the indicated view—node or network.
EID-1022	A session cannot be opened right now with this slot. Most likely someone else (using a different CTC) already has a session opened with this slot. Please try again later.	Refer to error message text.
EID-1023	This session has been terminated. This can happen if the card resets, the session has timed out, or if someone else (possibly using a different CTC) already has a session open with this slot.	Refer to error message text.
EID-1024	Error writing to {0}.	An error occurred while exporting an HTML report.
EID-1025	Unable to create Help Broker	CTC was unable to create the help broker for the online help.
EID-1026	Unable to locate HelpSet.	CTC was unable to locate the help set for the online help.
EID-1027	Unable to locate Help ID: {0}	CTC was unable to locate the help ID for the online help.
EID-1028	Error saving table {0}.	There was an error saving the specified table.
EID-1029	Malformed URL trying to download {0}.jar.	The URL used to download the JavaHelp JAR file is malformed.
EID-1030	IO Exception trying to download {0}.jar.	An input/output error occurred while CTC was downloading the specified JAR file.
EID-2001	No rolls selected.	No rolls were selected for the bridge and roll.
EID-2002	The Roll must be completed or cancelled before it can be deleted.	You cannot delete the roll unless it has been completed or cancelled.
EID-2003	Error deleting roll.	There was an error when CTC tried to delete the roll.
EID-2004	No IOS slot selected.	You did not select a Cisco IOS slot.
EID-2005	CTC cannot find the online help files for {0}. The files may have been moved, deleted, or not installed. To install online help, run the setup program on the software or documentation CDs.	CTC cannot find the online help files for the specified window. The files might have been moved, deleted, or not installed. To install online help, run the setup program on the software or documentation CDs.
EID-2006	Error editing circuit(s). {0} {1}.	An error occurred when CTC tried to open the circuit for editing.
EID-2007	Unable to save preferences.	CTC cannot save the preferences.

Table 4-1 Error Messages (continued)

Error ID	Error Message	Description
EID-2008	Unable to store circuit preferences. File not found.	CTC cannot find the file needed to save the circuit preferences.
EID-2009	Unable to store circuit preferences. I/O error.	An input/output error is preventing CTC from saving the circuit preferences.
EID-2010	Delete destination failed.	CTC could not delete the destination.
EID-2011	Circuit destroy failed.	CTC could not destroy the circuit.
EID-2012	Reverse circuit destroy failed.	CTC could not reverse the circuit destroy.
EID-2013	Circuit creation error. Circuit creation cannot proceed due to changes in the network which affected the circuit(s) being created. The dialog will close. Please try again.	Refer to error message text.
EID-2014	No circuit(s) selected.	You must select a circuit to complete this function.
EID-2015	Cannot delete circuit. {0}	CTC cannot delete the circuit.
EID-2016	Circuit deletion error.	There was an error deleting the circuit.
EID-2017	Error mapping circuit. {0}	There was an error mapping the circuit.
EID-2018	Circuit roll failure. The circuit has to be in the ACTIVE state in order to perform a roll.	Refer to error message text.
EID-2019	Circuit roll failure. The current version does not support bridge and roll on a VT tunnel.	Refer to error message text.
EID-2020	Circuit roll failure. The two circuits must have the same direction.	Refer to error message text.
EID-2021	Circuit roll failure. The two circuits must have the same size.	Refer to error message text.
EID-2022	Circuit roll failure. A maximum of two circuits can be selected for a bridge and roll operation.	Refer to error message text.
EID-2023	Error deleting circuit. {0}	There was an error deleting the circuit.
EID-2024	Node selection error.	There was an error during node selection.
EID-2025	This feature cannot be used. Verify that each of the endpoints of this circuit are running software that supports this feature.	This error is generated from the AnsOpticsParamsPane to indicate that the selected ring type is not supported by the endpoints of the circuit. In the VLAN pane it indicates that the backend spanning tree protocol (STP) disabling is not supported.
EID-2026	Request failed. {0}	Error occurred while attempting to switch a path protection circuit away from a span.
EID-2027	Error deleting circuit drop.	CTC could not delete the circuit drop.
EID-2028	Error removing circuit node.	CTC could not remove the circuit node.
EID-2029	The requested operation is not supported.	The task you are trying to complete is not supported by CTC.

Table 4-1 Error Messages (continued)

Error ID	Error Message	Description
EID-2030	Provisioning error.	There was an error during provisioning.
EID-2031	Error adding node.	There was an error while adding a node.
EID-2032	Error renaming circuit. {0}	CTC could not rename the circuit.
EID-2033	Cannot verify table data. {0} {1}	There was an internal error while validating the user changes during Apply. This error can occur in the Edit Circuit dialog box or in the BLSR table in the shelf view (rare condition).
EID-2034	Cannot verify table data. {0}	There was an internal error while validating the user changes during Apply. This error occurs in the Edit Circuit dialog box.
EID-2035	The source and destination nodes are not connected.	Refer to error message text.
EID-2036	Error deleting circuit drop.	There was an error deleting the circuit drop.
EID-2037	Application error. Cannot find attribute for {0}.	CTC cannot find an attribute for the specified item.
EID-2038	Invalid protection operation.	There was an invalid protection operation.
EID-2039	Internal communication error.	CTC experienced an internal communication error.
EID-2040	Please select a node first.	You must select a node before performing the task.
EID-2041	No paths are available on this link. Please make another selection.	Refer to error message text.
EID-2042	This span is not selectable. Only the green spans with an arrow may be selected.	Refer to error message text.
EID-2043	This node is not selectable. Only the source node and nodes attached to included spans (blue) are selectable. Selecting a selectable node will enable its available outgoing spans.	Refer to error message text.
EID-2044	This link may not be included in the required list. Constraints only apply to the primary path.	Refer to error message text.
EID-2045	This link may not be included in the required list. Only one outgoing link may be included for each node.	Refer to error message text.
EID-2046	No paths are available on this link. Please make another selection.	Refer to error message text.
EID-2047	Error validating slot number. Please enter a valid value for the slot number.	Refer to error message text.
EID-2048	Error validating port number. Please enter a valid value for the port number.	Refer to error message text.
EID-2049	Delete destination failed.	CTC could not delete the destination.
EID-2050	New circuit destroy failed.	CTC could not destroy the new circuit.
EID-2051	Circuit cannot be downgraded. {0}	The specified circuit cannot be downgraded.

Table 4-1 Error Messages (continued)

Error ID	Error Message	Description
EID-2052	Error during circuit processing.	There was an error during the circuit processing.
EID-2053	No rolls selected. {0}	You did not select a roll for this task.
EID-2054	Endpoint selection error.	There was an error during the endpoint selection.
EID-2055	No endpoints are available for this selection. Please make another selection.	This error occurs in the circuit creation dialog only during a race condition that has incorrectly allowed entities without endpoints to be displayed in the combo boxes.
EID-2056	Communication error.	An internal error occurred while synchronizing alarms with the nodes. Network Alarm pane.
EID-2058	Node deletion error. {0}	There was an error during the node deletion.
EID-2059	Node deletion Error. {0}	There was an error during the node deletion.
EID-2060	No PCA circuits found.	CTC could not find any protection channel access (PCA) circuits for this task.
EID-2061	Error defining VLAN.	There was an error defining the VLAN.
EID-2062	Cannot delete VLAN. No VLAN(s) are selected. Please select a VLAN.	Cannot delete VLAN. No VLAN(s) are selected. Please select a VLAN.
EID-2063	Cannot delete default VLAN.	The selected VLAN is the default VLAN, and cannot be deleted.
EID-2064	Error deleting VLANs. {0}	There was an error deleting the VLAN.
EID-2065	Cannot import profile. Profile "{0}" exists in the editor and the maximum number of copies (ten) exists in the editor. Aborting the import. The profile has already been loaded eleven times.	Cannot import profile. The specified profile exists in the editor and the maximum number of copies (ten) exists in the editor. Aborting the import. The profile has already been loaded eleven times.
EID-2066	Unable to store profile. Error writing to {0}.	CTC encountered an error while trying to store the profile.
EID-2067	File write error. {0}	CTC encountered a file write error.
EID-2068	ProvAlarmsPanedoImportNode error.	CTC encountered a ProvAlarmsPanedoImportNode error.
EID-2069	File not found or I/O exception. {0}	Either the file was not found, or there was an input/output exception.
EID-2070	Failure deleting profile. {0}	The profile deletion failed.
EID-2071	Only one column may be highlighted.	Refer to error message text.

Table 4-1 Error Messages (continued)

Error ID	Error Message	Description
EID-2072	Only one profile may be highlighted.	Refer to error message text.
EID-2073	This column is permanent and may not be removed.	Refer to error message text.
EID-2074	Select one or more profiles.	Refer to error message text.
EID-2075	This column is permanent and may not be reset.	Refer to error message text.
EID-2076	Error in reset refresh. {0}	CTC encountered an error during the view reset/refresh.
EID-2077	This column is permanent and may not be renamed.	Refer to error message text.
EID-2078	At least two columns must be highlighted.	Refer to error message text.
EID-2079	Cannot load alarmables into table. There are no reachable nodes from which the list of alarmables may be loaded. Please wait until such a node is reachable and try again.	Refer to error message text.
EID-2080	Node {0} does not have deletable profiles.	The specified node does not have any deletable profiles.
EID-2081	Error removing profile {0} from node {1}.	There was an error removing the specified profile from the node.
EID-2082	Cannot find profile {0} on node {1}.	CTC cannot find the specified profile from the specified node.
EID-2083	Error adding profile {0} to node {1}.	There was an error adding the specified profile to the specified node.
EID-2084	Node {0} has no profiles.	The specified node has no profiles.
EID-2085	Invalid profile selection. No profiles were selected.	Refer to error message text.
EID-2086	Invalid node selection. No nodes were selected.	Refer to error message text.
EID-2087	No profiles were selected. Please select at least one profile.	Refer to error message text.
EID-2088	Invalid profile name.	Refer to error message text.
EID-2089	Too many copies of {0} exist. Please choose another name.	Too many copies of the specified item exist.
EID-2090	No nodes selected. Please select the node(s) on which to store the profile(s).	Refer to error message text.
EID-2091	Unable to switch to node {0}.	CTC is unable to switch to the specified node.
EID-2092	General exception error.	CTC encountered a general exception error while trying to complete the task.
EID-2093	Not enough characters in name. {0}	There are not enough characters in the name.
EID-2094	Password and confirmed password fields do not match.	You must make sure the two fields have the same password.
EID-2095	Illegal password. {0}	The password you entered is not allowed.
EID-2096	The user must have a security level.	You must have an assigned security level to perform this task.
EID-2097	No user name specified.	You did not specify a user name.

Table 4-1 Error Messages (continued)

Error ID	Error Message	Description
EID-2098	Ring switching error.	There was an error during the ring switch.
EID-2099	Ring switching error.	There was an error during the ring switch.
EID-2100	Please select at least one profile to delete.	Refer to error message text.
EID-2101	Protection switching error.	There was an error during the protection switch.
EID-2102	{0} The forced switch could not be removed for some circuits. You must switch these circuits manually.	The forced switch could not be removed for some circuits. You must switch these circuits manually.
EID-2103	Span upgrade error.	There was an error during the span upgrade.
EID-2104	Unable to switch circuits back as one or both nodes are not reachable.	This error occurs during the path protection span upgrade procedure.
EID-2105	Span upgrade error.	There was an error during the span upgrade.
EID-2106	The node name cannot be empty.	You must supply a name for the node.
EID-2107	Error adding {0}, unknown host.	There was an error adding the specified item.
EID-2108	{0} is already in the network.	The specified item is already in the network.
EID-2109	The node is already in the current login group.	Refer to error message text.
EID-2110	Please enter a number between 0 and {0}.	You must enter a number in the range between 0 and the specified value.
EID-2111	This node ID is already in use. Please choose another.	Refer to error message text.
EID-2112	You must enter a number and it must be between 0 and {0}.	You must enter a number and it must be between 0 and the specified number.
EID-2113	Cannot set extension byte. {0}	CTC cannot set the extension byte.
EID-2114	Card communication failure. Error applying operation.	This error can occur during an attempt to apply a BLSR protection operation to a line.
EID-2115	Error applying operation. {0}	There was an error applying the specified operation.
EID-2116	Invalid extension byte setting. {0}	The extension byte set is invalid.
EID-2118	Cannot delete ring. There is a protection operation set. All protection operations must be clear for ring to be deleted.	Refer to error message text.
EID-2119	Cannot delete {0} because a protection switch is in effect. Please clear any protection operations, make sure that the reversion time is not "never" and allow any protection switches to clear before trying again.	Refer to error message text.
EID-2120	The following nodes could not be unprovisioned {0} Therefore you will need to delete this {1} again later.	The specified nodes could not be unprovisioned.

Table 4-1 Error Messages (continued)

Error ID	Error Message	Description
EID-2121	Cannot upgrade ring. {0}	CTC cannot upgrade the ring.
EID-2122	Inadequate ring speed for upgrade. Only {0} (or higher) {1} can be upgraded to 4-fiber.	You have selected an incorrect ring speed for upgrade. Only rings within the specified parameters can be upgraded to 4-fiber.
EID-2123	Non-upgradable nodes. Verify that the following nodes have at least two in-service ports with the same speed as the 2-fiber {0}. The ports cannot serve as a timing reference, and they cannot have DCC terminations or overhead circuits. {1}	Nonupgradable nodes. Verify that the specified nodes have at least two in-service ports with the same speed as the 2-fiber. The specified ports cannot serve as a timing reference, and they cannot have data communications channel (DCC) terminations or overhead circuits.
EID-2124	You cannot add this span because it is connected to a node that already has the east and west ports defined.	Refer to error message text.
EID-2125	You cannot add this span as it would cause a single card to host both the east span and the west span. A card cannot protect itself.	Refer to error message text.
EID-2126	OSPF area error.	There is an Open Shortest Path First (OSPF) area error.
EID-2127	You cannot add this span. It would cause some circuits to occupy different STS regions on different spans.	Refer to error message text.
EID-2128	Illegal state error.	An internal error occurred while trying to remove a span from a BLSR. This alarm occurs in the network-level BLSR creation dialog box.
EID-2129	This port is already assigned. The east and west ports must be different.	Refer to error message text.
EID-2130	The ring ID value is not valid. Please enter a valid number between 0 and 9999.	Refer to error message text.
EID-2131	Cannot set reversion to INCONSISTENT.	You must select another reversion type.
EID-2132	Invalid ring ID. {0}	The ring ID you entered is invalid. Please use another ID.
EID-2133	Node selection error.	There is an error selecting the node.
EID-2134	File not found. Unable to store overhead circuit preferences.	File not found. Unable to store overhead circuit preferences.
EID-2135	I/O error. Unable to store overhead circuit preferences.	Input/Output error. Unable to store overhead circuit preferences.
EID-2136	Circuit rename failed. {0}	CTC could not rename the circuit.
EID-2137	Merge circuits error.	There was an error merging the circuits.
EID-2138	Cannot delete all destinations. Please try again.	Refer to error message text.

Table 4-1 Error Messages (continued)

Error ID	Error Message	Description
EID-2139	Error updating destinations.	There was an error updating the circuit destinations.
EID-2140	Merge circuits error.	There was an error merging the circuits.
EID-2141	No circuits selected. {0}	You did not select a circuit.
EID-2142	Circuit deletion error.	There was an error deleting the circuit.
EID-2143	No online help version selected. Cannot delete the online help book.	You cannot delete the online help.
EID-2144	Error deleting online help book(s). {0}	You cannot delete the online help.
EID-2145	Unable to locate a node with an IOS card.	Unable to locate a node with a Cisco IOS card.
EID-2146	Security violation. You may only logout your own account.	Refer to error message text.
EID-2147	Security violation. You may only change your own account.	Refer to error message text.
EID-2148	Security violation. You may not delete the account under which are currently logged in.	Refer to error message text.
EID-2173	Port unavailable. The desired CTC CORBA (IIOP) listener port, {0}, is already in use or you do not have permission to listen on it. Please select an alternate port.	The port is unavailable. The desired CTC Common Object Request Broker Architecture (CORBA) Internet Inter-ORB Protocol (IIOP) listener port is already in use or you do not have permission to listen on it. Please select an alternate port.
EID-2174	Invalid number entered. Please check it and try again.	You entered an invalid firewall port number.
EID-2175	Extension byte mismatch. {0}	There is a mismatch with the extension byte.
EID-2176	Not all spans have the same OSPF Area ID. This will cause problems with protection switching. To determine the OSPF Area for a given span, place the cursor mouse over the span and the OSPF Area will be displayed.	Refer to error message text.
EID-2177	Extension byte mismatch. {0}	There is a mismatch with the extension byte.
EID-2178	Only one edit pane can be opened at a time. The existing pane will be displayed.	Refer to error message text.
EID-2179	There is no update as the circuit has been deleted.	Because the circuit has been deleted, there is no update for it.
EID-2180	CTC initialization failed in step {0}.	CTC initialization failed in the specified step.
EID-2181	This link may not be included as it originates from the destination.	Refer to error message text.
EID-2182	The value of {0} is invalid.	The value of the specified item is invalid.

Table 4-1 Error Messages (continued)

Error ID	Error Message	Description
EID-2184	Cannot enable the Spanning Tree Protocol (STP) on some ports because they have been assigned an incompatible list of VLANs. You can view the VLAN/Spanning Tree table or reassign ethernet ports VLANs	Refer to error message text.
EID-2185	Cannot assign the VLANs on some ports because they are incompatible with the STP. You can view the VLAN/Spanning Tree table or reassign VLANs	Refer to error message text.
EID-2186	Software download failed on node {0}.	The software could not be downloaded onto the specified node.
EID-2187	The maximum length for the ring name that can be used is {0}. Please try again.	You must shorten the length of the ring name.
EID-2188	The nodes in this ring do not support alphanumeric IDs. Please use a ring ID between {0} and {1}.	The nodes in this ring do not support alphanumeric IDs. Please use a ring ID within the specified range.
EID-2189	TL1 keyword "all" can not be used as the ring name. Please provide another name.	Refer to error message text.
EID-2190	Adding this span will cause the ring to contain more nodes than allowed.	Refer to error message text.
EID-2191	Ring name must not be empty	You must supply a ring name.
EID-2192	Cannot find a valid route for the circuit creation request.	Refer to error message text.
EID-2193	Cannot find a valid route for the circuit drop creation request.	Refer to error message text.
EID-2194	Cannot find a valid route for the roll creation request.	Refer to error message text.
EID-2195	The circuit VLAN list cannot be mapped to one spanning tree. You can view the VLAN/Spanning Tree table or reassign VLANs.	Refer to error message text.
EID-2196	Unable to relaunch the CTC. {0}	There is an error relaunching CTC.
EID-2197	CORBA failure. Unable to proceed.	There was a CORBA failure, and the task cannot proceed.
EID-2198	Unable to switch to the {0} view.	CTC is unable to switch to the specified view.
EID-2199	Login failed on {0} {1}	The login failed on the specified task.
EID-2200	CTC has detected a jar file deletion. The jar file was used to manage one or more nodes. This CTC session will not be able to manage those nodes and they will appear gray on the network map. It is recommended that you exit this CTC session and start a new one.	Refer to error message text.
EID-2201	{0}	CTC encountered an error.
EID-2202	Intra-node circuit must have 2 sources to be Dual Ring Interconnect.	Intra-node circuit must have two sources to be a dual-ring interconnect (DRI).
EID-2203	No member selected.	You must select a member.
EID-2204	Number of circuits must be a positive integer	The number of circuits cannot be negative.

Table 4-1 Error Messages (continued)

Error ID	Error Message	Description
EID-2205	Circuit Type must be selected	You must select a circuit type.
EID-2206	Unable to autoselect profile! Please select profile(s) to store and try again.	Refer to error message text.
EID-2207	You cannot add this span. Either the ring name is too big (i.e., ring name length is greater than {0}) or the endpoints do not support alphanumeric IDs.	You cannot add this span. Either the ring name is too big (that is, the ring name length is greater than the specified length) or the endpoints do not support alphanumeric IDs.
EID-2208	This is an invalid or unsupported JRE	The version of Java Runtime Environment (JRE) is either invalid or unsupported.
EID-2209	The user name must be at least {0} characters long.	The user name must be at least the specified character length.
EID-2210	No package name selected	You must select a package name.
EID-2211	No node selected for upgrade	You must select a node for the upgrade.
EID-2212	Protected Line is not provisionable	The protected line cannot be provisioned.
EID-2214	The node is disconnected. Please wait till the node reconnects.	Refer to error message text.
EID-2215	Error while leaving {0} page.	There was an error while leaving the specified page.
EID-2216	Error while entering {0} page.	There was an error entering the specified page.
EID-2217	Some conditions could not be retrieved from the network view	Refer to error message text.
EID-2218	Bandwidth must be between {0} and {1} percent.	The bandwidth must be within the specified parameters.
EID-2219	Protection operation failed, XC loopback is applied on cross-connection	Protection operation failed; a cross-connect (XC) loopback will be applied on cross-connection.
EID-2220	The tunnel status is INCOMPLETE. CTC will not be able to change it. Please try again later	Refer to error message text.
EID-2990	Ethernet circuits must be bidirectional.	You attempted to make an Ethernet circuit unidirectional.
EID-2991	Error while creating connection object at {0}.	There was an error creating a connection object at the specified location.
EID-2992	DWDM Link can be used only for Optical Channel circuits.	The dense wavelength division multiplexing (DWDM) link can be used only for optical channel network connection (OCHNC) circuits.
EID-2993	Ochnc circuit link excluded - wrong direction.	The OCHNC circuit link is excluded because it is in the wrong direction.
EID-2994	DWDM Link does not have Wavelength available.	Refer to error message text.
EID-2995	Laser already ON.	Refer to error message text.

Table 4-1 Error Messages (continued)

Error ID	Error Message	Description
EID-3001	An Ethernet RMON threshold with the same parameters already exists. Please change one or more of the parameters and try again.	An Ethernet remote monitoring (RMON) threshold with the same parameters already exists. Please change one or more of the parameters and try again.
EID-3002	Error retrieving defaults from the node {0}	There was an error retrieving the defaults from the specified node.
EID-3003	Cannot load file {0}	CTC cannot load the specified file.
EID-3004	Cannot load properties from the node	Refer to error message text.
EID-3005	Cannot save NE Update values to file {0}	CTC cannot save the network element (NE) update values to the specified file.
EID-3006	Cannot load NE Update properties from the node	Refer to error message text.
EID-3007	Provisioning Error for {0}	There was a provisioning error for the specified item.
EID-3008	Not a Barolo Card	You cannot perform DWDM automatic node setup (ANS) from the Card view. Please navigate to the Shelf view and try again.
EID-3009	No {0} selected	No item selected.
EID-3010	Unable to Create Bidirectional Optical Link	Refer to error message text.
EID-3011	The file {0} doesn't exist or cannot be read	The specified file does not exist or cannot be read.
EID-3012	The size of {0} is zero	The size of the item is zero.
EID-3013	{0} encountered while restoring DB	The specified item was encountered while restoring the database (DB).
EID-3014	Job terminated, {0} was encountered	The job terminated because the specified item was encountered.
EID-3015	{0} encountered while performing DB backup	The specified item was encountered while performing the DB backup.
EID-3016	Invalid subnet address	Refer to error message text.
EID-3017	Subnet address already exists	Refer to error message text.
EID-3018	Standby TSC not ready	The standby Timing and Shelf Control card (TSC) not ready.
EID-3019	Incomplete internal subnet address	There is an incomplete internal subnet address.
EID-3020	TSC One and TSC Two subnet addresses cannot be the same	Refer to error message text.
EID-3021	{0}	CTC encountered an error.
EID-3022	Requested action not allowed	The requested action is not allowed.
EID-3023	Unable to retrieve Low Order Cross Connect Mode	Refer to error message text.
EID-3024	unable to switch Low Order Cross Connect Mode	Refer to error message text.
EID-3025	Error in getting thresholds	The was an error retrieving the thresholds.

Table 4-1 Error Messages (continued)

Error ID	Error Message	Description
EID-3026	Cannot modify Send DoNotUse	CTC cannot modify Send DoNotUse.
EID-3027	Cannot modify EnableSyncMsg	CTC cannot modify EnableSyncMsg.
EID-3028	Cannot change port type	CTC cannot change the port type.
EID-3029	Unable to switch to the byte because an overhead change is present on this byte of the port	Refer to error message text.
EID-3031	Error hard-resetting card	There was an error hard-resetting card.
EID-3032	Error resetting card	There was an error resetting the card.
EID-3033	The lamp test is not supported on this shelf	Refer to error message text.
EID-3034	Communication failure	There was a communication failure.
EID-3035	The Cross Connect Diagnostics cannot be performed	Refer to error message text.
EID-3036	The Cross Connect Diagnostics test is not supported on this shelf/CORBA.BAD_OPERATION	The cross-connect diagnostics test is not supported on this shelf.
EID-3037	A software downgrade cannot be performed to the selected version while a SSXC card is inserted in this shelf. Please follow the steps to replace the SSXC with a CXC card before continuing the software downgrade.	A software downgrade cannot be performed to the selected version while a Single-Shelf Cross-Connect (SSXC) card is inserted in this shelf. Please follow the steps to replace the SSXC with a Core Cross-Connect card (CXC) card before continuing the software downgrade.
EID-3038	A software downgrade cannot be performed at the present time.	Refer to error message text.
EID-3039	Card change error	There was a card change error.
EID-3040	Invalid card type	The card type is invalid.
EID-3041	Error Applying Changes	There was an error applying the changes.
EID-3042	The Flow Ctrl Lo value must be less than the Flow Ctrl Hi value for all ports in the card.	Refer to error message text.
EID-3043	Error in getting Line Info settings	Refer to error message text.
EID-3044	Error in getting Line Admin Info settings	Refer to error message text.
EID-3045	Error in getting Transponder Line Admin Info settings	Refer to error message text.
EID-3046	The flow control water mark value must be between {0} and {1}, inclusive.	The flow control watermark value must be between the specified values.
EID-3047	The file named {0} could not be read. Please check the name and try again.	The specified file could not be read. Please check the name and try again.
EID-3048	There is no IOS startup config file available to download.	There is no Cisco IOS startup configuration file available to download.
EID-3049	There was a software error attempting to download the file. Please try again later.	Refer to error message text.
EID-3050	An exception was caught trying to save the file to your local file system	Refer to error message text.

Table 4-1 Error Messages (continued)

Error ID	Error Message	Description
EID-3051	The maximum size for a config file in bytes is {0}	The maximum size for a configuration file in bytes is the value specified in the message.
EID-3052	There was an error saving the config file to the TCC.	Refer to error message text.
EID-3053	The value of {0} must be between {1} and {2}	The value of the item must be between the specified values.
EID-3054	Cannot remove provisioned input/output ports or another user is updating the card, please try later.	Cannot remove provisioned input/output ports or another user is updating the card. Please try later.
EID-3055	Can't Create Soak Maintance Pane	CTC cannot create Soak Maintenance Pane.
EID-3056	Cannot save defaults to file {0}	Cannot save defaults to the specified file.
EID-3057	Cannot load default properties from the node	Refer to error message text.
EID-3058	File {0} does not exist	The specified file does not exist.
EID-3059	Error in refreshing	There was an error in refreshing.
EID-3060	The ALS Recovery Interval must be between 100 seconds and 300 seconds.	The automatic laser shutdown (ALS) Recovery Interval must be between 100 seconds and 300 seconds.
EID-3061	The ALS Recovery Pulse Width must be between 2.00 seconds and 100.0 seconds.	The ALS Recovery Pulse Width must be between 2.00 seconds and 100.0 seconds.
EID-3062	Error in setting values	Refer to error message text.
EID-3063	Error in getting Bridge Port settings	Refer to error message text.
EID-3064	Not a G1000 Card	This card is not a G1000 card.
EID-3065	Create Ether Threshold	You must create an Ethernet threshold.
EID-3066	Minimum sample period must be greater than or equal to 10	Refer to error message text.
EID-3067	Rising Threshold Invalid Entry, valid range is from 1 to {0}	This is an invalid rising threshold entry. The valid range is from 1 to the specified value.
EID-3068	Falling Threshold Invalid Entry, valid range is from 1 to {0}	This is an invalid falling threshold entry. The valid range is from 1 to the specified value.
EID-3069	Rising Threshold must be greater than or equal to Falling Threshold	Refer to error message text.
EID-3070	Error in Data For Ports {0} Exactly one VLAN must be marked Untagged for each port. These changes will not be applied.	There was an error in the data for the specified ports. Exactly one VLAN must be marked Untagged for each port. These changes will not be applied.
EID-3071	Get Learned Address	Unable to retrieve the learned MAC address from the NE..
EID-3072	Clear Learned Address	Failure attempting to clear the learned MAC address from a specific card or ethergroup.
EID-3073	Clear Selected Rows	Failure attempting to clear the learned MAC address from a specific card or ethergroup.

Table 4-1 Error Messages (continued)

Error ID	Error Message	Description
EID-3074	Clear By {0}	Error encountered trying to clear the learned MAC address from either a VLAN or a port.
EID-3075	At least one row in Param column needs to be selected.	Refer to error message text.
EID-3076	CTC lost its connection with this node. The NE Setup Wizard will exit.	Refer to error message text.
EID-3077	No Optical Link Selected	Refer to error message text.
EID-3078	Unable to Create Optical Link	Refer to error message text.
EID-3079	Cannot apply defaults to node {0}	Cannot apply defaults to the specified node.
EID-3080	Cannot go to the target tab {0}	Cannot go to the target tab.
EID-3081	Port type can't be changed	Refer to error message text.
EID-3082	Cannot modify the {0} extension byte	Cannot modify the extension byte.
EID-3083	Error in getting stats	Error in getting statistics.
EID-3084	OSC termination is in use. Error deleting OSC Termination	Optical service channel (OSC) termination is in use. Error deleting OSC termination.
EID-3085	No OSC Terminations selected	Refer to error message text.
EID-3086	One or more Osc terminations could not be created	Refer to error message text.
EID-3087	OSC termination could not be edited	Refer to error message text.
EID-3088	No {0} card to switch	No card of the specified type to switch.
EID-3089	Can't use/change {0} state when {0} is failed or missing.	Cannot use/change the specified state when it is failed or missing.
EID-3090	Can't perform operation as {0} is {1}LOCKED_ON/LOCKED_OUT.	Cannot perform operation.
EID-3091	Can't perform the operation as protect is active.	Refer to error message text.
EID-3092	Can't perform the operation in module's current state.	Refer to error message text.
EID-3093	Can't perform the operation as duplex pair is {0}locked.	Refer to error message text.
EID-3094	Can't perform the operation as no XC redundancy is available.	Refer to error message text.
EID-3095	Deletion failed since the circuit is in use	Refer to error message text.
EID-3096	The Ring ID could not be created	Refer to error message text.
EID-3097	The ring termination is in use.	Refer to error message text.
EID-3098	No Ring Terminations selected	Refer to error message text.
EID-3099	Sorry, entered key does not match existing Authentication key.	The entered key does not match existing authentication key.
EID-3100	Error in authentication	There was an error in authentication.
EID-3101	DCC Metric is not in the range 1 - 65535.	The DCC Metric is not in the range 1 to 65535.
EID-3102	Invalid DCC Metric	There was an Invalid DCC Metric.
EID-3103	Invalid IP Address {0}	The IP Address is Invalid.

Table 4-1 Error Messages (continued)

Error ID	Error Message	Description
EID-3104	Router priority is not in the range of 0 - 255	The Router priority is not in the range of 0 to 255.
EID-3105	Invalid Router Priority	The Router Priority is Invalid.
EID-3106	Hello Interval is not in the range of 1 - 65535	The Hello Interval is not in the range of 1 to 65535.
EID-3107	Invalid Hello Interval	The Hello Interval is Invalid.
EID-3108	Dead Interval is not in the range 1 - 0x7fffffff	The Dead Interval is not in the range 1 to 0x7fffffff.
EID-3109	Invalid Dead Interval	The Dead Interval is invalid.
EID-3110	Dead Interval must be larger than Hello Interval	Refer to error message text.
EID-3111	LAN transit delay is not in the range of 1 - 3600 seconds	The LAN transit delay is not in the range of 1 to 3600 seconds.
EID-3112	Invalid Transit Delay	The transmit delay is invalid.
EID-3113	Retransmit Interval is not in the range 1 - 3600 seconds	The retransmit interval is not in the range 1 to 3600 seconds.
EID-3114	Invalid Retransmit Int	The retransmit interval is invalid.
EID-3115	LAN Metric is not in the range 1 - 65535.	The LAN Metric is not in the range 1 to 65535.
EID-3116	Invalid LAN Metric	The LAN Metric is invalid.
EID-3117	If OSPF is active on LAN, no DCC Area Ids may be 0.0.0.0. Please change all DCC Area Ids to non-0.0.0.0 values before enabling OSPF on the LAN.	Refer to error message text.
EID-3118	If OSPF is active on LAN, LAN Area ID may not be the same as DCC Area Id.	Refer to error message text.
EID-3119	Validation Error	There is a validation error.
EID-3120	No object of type {0} selected to delete	No object of the selected type selected to delete.
EID-3121	Error Deleting {0}	There is an error deleting the item.
EID-3122	No object of type {0} selected to edit	No object of the specified type selected to edit.
EID-3123	Error Editing {0}	There was an error editing the item.
EID-3124	{0} termination is in use. Check if {0} is used by IPCC.	The specified termination is in use.
EID-3125	No {0} Terminations selected	No specified terminations are selected.
EID-3126	{0} termination could not be edited	The specified termination could not be edited.
EID-3127	Unable to provision orderwire because E2 byte is in use by BLSR.	Refer to error message text.
EID-3128	The authentication key may only be {0} characters maximum	The authentication key can only be the specified characters maximum.
EID-3129	The authentication keys do not match!	Refer to error message text.

Table 4-1 Error Messages (continued)

Error ID	Error Message	Description
EID-3130	Error creating Area Virtual Link	CTC encountered an error creating the Area Virtual Link.
EID-3131	Error creating Virtual Link	CTC encountered an error creating the Virtual Link.
EID-3132	Error setting area range {0}, {1}, false.	CTC encountered an error setting the area range for the specified values.
EID-3133	Max number Of Area Ranges Exceeded	The maximum number of area ranges has been exceeded.
EID-3134	Invalid Area ID. Use DCC OSPF Area ID, LAN Port Area ID, or 0.0.0.0.	Refer to error message text.
EID-3135	Invalid Mask	Refer to error message text.
EID-3136	Invalid Range Address	Refer to error message text.
EID-3137	Your request has been rejected because the timing source information was updated while your changes were still pending. Please retry.	Refer to error message text.
EID-3138	Invalid clock source for switching.	Refer to error message text.
EID-3139	Cannot switch to a reference of inferior quality.	Refer to error message text.
EID-3140	Higher priority switch already active.	Refer to error message text.
EID-3141	Attempt to access a bad reference.	Refer to error message text.
EID-3142	No Switch Active.	Refer to error message text.
EID-3143	Error creating Static Route Entry	Refer to error message text.
EID-3144	Max number Of Static Routes Exceeded	The maximum number of static routes has been exceeded.
EID-3145	RIP Metric is not in the range 1-15.	The Routing Information Protocol (RIP) metric is not in the range 1 to 15.
EID-3146	Invalid RIP Metric	Refer to error message text.
EID-3147	Error creating Summary Address	Refer to error message text.
EID-3148	No Layer 2 domain selected	Refer to error message text.
EID-3149	Unable to retrieve MAC addresses	Refer to error message text.
EID-3150	The target file {0} is not a normal file.	The specified target file is not a normal file.
EID-3151	The target file {0} is not writeable.	The specified target file is not writeable.
EID-3152	Error creating Protection Group	CTC encountered an error creating Protection Group.
EID-3153	Cannot delete card, it is in use	Cannot delete card. It is in use.
EID-3154	Cannot {0} card, provision error	CTC cannot perform the task on the card.
EID-3155	Error Building Menu	CTC encountered an error building the menu.
EID-3156	Error on building menu (cards not found for {0} group)	CTC encountered an error on building menu (cards not found for the specified group).

Table 4-1 Error Messages (continued)

Error ID	Error Message	Description
EID-3157	setSelectedModel unexpected model class {0}	CTC encountered an unexpected model class while trying to complete the task.
EID-3158	Unable to switch, a similar or higher priority condition exists on peer or far-end card	Refer to error message text.
EID-3159	Error applying operation	CTC encountered an error applying this operation.
EID-3160	{0} Error	CTC encountered the displayed error.
EID-3161	Ring Upgrade Error	Refer to error message text.
EID-3162	This protection operation cannot be set because the protection operation on the other side has been changed but not yet applied.	Refer to error message text.
EID-3163	Cannot validate data for row {0}	Cannot validate data for the specified row.
EID-3164	New Node ID ({0}) for Ring ID {1} duplicates ID of node {3}	The new specified Node ID for the specified Ring ID is the same as the second specified Node ID.
EID-3165	Ring IDs must be unique	Refer to error message text.
EID-3166	Error refreshing {0} table	CTC encountered an error refreshing the specified table.
EID-3167	Slot already in use	Refer to error message text.
EID-3169	Error Adding Card	CTC encountered an error adding the card.
EID-3170	Cannot delete card, {0}	Cannot delete the specified card.
EID-3171	Error creating Trap Destination	CTC encountered an error creating the trap destination.
EID-3172	No Ether Thresholds selected	Refer to error message text.
EID-3173	The contact '{0}' exceeds the limit of {1} characters.	The specified contact exceeds the specified character limit.
EID-3174	The location '{0}' exceeds the limit of {1} characters.	The specified location exceeds the specified character limit.
EID-3175	The operator identifier '{0}' exceeds the limit of {1} characters.	The specified operator identifier exceeds the specified character limit.
EID-3176	The operator specific info '{0}' exceeds the limit of {1} characters.	The specified operator specific information exceeds the specified character limit.
EID-3177	The name '{0}' is empty!	The specified name is empty.
EID-3178	The name '{0}' exceeds the limit of {1} characters.	The specified name exceeds the specified character limit.
EID-3179	Protect card is in use	Refer to error message text.
EID-3180	1+1 Protection Group does not exist.	Refer to error message text.
EID-3181	Y Cable Protection Group does not exist.	Refer to error message text.
EID-3182	The Topology Element is in use and can't be deleted as requested	Refer to error message text.

Table 4-1 Error Messages (continued)

Error ID	Error Message	Description
EID-3183	Error Deleting Protection Group	CTC encountered an error deleting the protection group.
EID-3184	No {0} selected	You must select an item before completing this task.
EID-3185	There is a protection switch operation on this ring. Therefore, it cannot be deleted at this time.	Refer to error message text.
EID-3186	Busy {0} is {1} and cannot be deleted as requested.	The item is in use and cannot be deleted as requested.
EID-3187	Error deleting Trap Destination	CTC encountered an error deleting the trap destination.
EID-3188	Invalid UCP Node ID value	Invalid Unified Control Plane (UCP) Node ID value.
EID-3189	Invalid Circuit Retry Initial Interval value	Refer to error message text.
EID-3190	Invalid Circuit Retry Max Interval value	Refer to error message text.
EID-3191	Invalid RSVP Recovery value	Invalid Resource Reservation Protocol (RSVP) recovery value.
EID-3192	Invalid RSVP Refresh value	Refer to error message text.
EID-3193	Invalid RESV timeout value	Invalid reservation (RESV) timeout value.
EID-3194	Invalid RESV CONF timeout value	Invalid reservation confirmation (RESV CONF) timeout value.
EID-3195	Invalid Source Deletion in Progress timeout value	Refer to error message text.
EID-3196	Invalid Destination Deletion in Progress timeout value	Refer to error message text.
EID-3197	Unable to delete circuit origin/termination {0}	Unable to delete the specified circuit origin/termination.
EID-3198	Error refreshing UCP circuit table	Refer to error message text.
EID-3199	Unable to delete UCP Interface {0}	Unable to delete the specified UCP interface.
EID-3200	TNA Address may not be empty	Transport network assigned (TNA) address cannot be empty.
EID-3201	Error refreshing UCP Interface table	Refer to error message text.
EID-3202	Unable to delete IPCC {0}	Unable to delete the specified IP contact center (IPCC).
EID-3203	{0} IPCC may not be empty	The specified IPCC cannot be empty.
EID-3204	Invalid {0} IPCC value	The specified IPCC value is invalid.
EID-3205	MTU value may not be empty for SDCC IPCC	The maximum transmission unit (MTU) value can not be empty for SDCC IPCC.
EID-3206	MTU value may not be negative	MTU value cannot be negative.
EID-3207	Error refreshing IPCC table	Refer to error message text.
EID-3208	Unable to delete neighbor {0}	Unable to delete the specified neighbor.
EID-3209	Neighbor name may not be empty.	Refer to error message text.

Table 4-1 Error Messages (continued)

Error ID	Error Message	Description
EID-3210	Neighbor name may not exceed {0} characters	Neighbor name cannot exceed the specified number of characters.
EID-3211	Error refreshing table	Encountered an error while responding to an update event from the NE. Unable to properly refresh the table values.
EID-3212	IPCC Create Error	Error creating the IPCC.
EID-3213	UCP Neighbor Create Error	Error creating the UCP neighbor.
EID-3214	Could not get number of HOs for line	Refer to error message text.
EID-3215	Error in refreshing	Used frequently in pane classes to indicate a general error condition when trying to refresh from the model.
EID-3216	Invalid Proxy Port	Invalid Proxy port.
EID-3217	Could not refresh stats.	Could not refresh statistics.
EID-3218	Launch ANS	Launch advanced network service (ANS).
EID-3219	Refresh ANS	Failure trying to retrieve optical link information.
EID-3220	Error refreshing row {0}	Error refreshing the specified row.
EID-3221	Communication Error	Refer to error message text.
EID-3222	Could not clear stats	Refer to error message text.
EID-3223	Error cancelling software upgrade	Refer to error message text.
EID-3224	Error accepting load	Refer to error message text.
EID-3225	Error in pane refresh	Refer to error message text.
EID-3226	Error refreshing page	Refer to error message text.
EID-3227	Could not set baseline	Refer to error message text.
EID-3228	Error refreshing screen	Refer to error message text.
EID-3229	RIP is active on the LAN. Please disable RIP before enabling OSPF.	RIP is active on the LAN. Please disable RIP before enabling OSPF.
EID-3230	OSPF is active on the LAN. Please disable OSPF before enabling RIP.	OSPF is active on the LAN. Please disable OSPF before enabling RIP.
EID-3231	Error in Set OPR	Error in setting optical power received (OPR).
EID-3232	Cannot transition port state indirectly: try editing directly	Refer to error message text.
EID-3233	Current loopback provisioning does not allow this state transition	Refer to error message text.
EID-3234	Current synchronization provisioning does not allow this state transition	Refer to error message text.
EID-3235	Cannot transition state on monitored port	Refer to error message text.
EID-3236	DB Restore failed. {0}	The specified database restore failed.
EID-3237	DB Backup failed. {0}	The specified database backup failed.

Table 4-1 Error Messages (continued)

Error ID	Error Message	Description
EID-3238	Send PDIP setting on {0} is inconsistent with that of control node {1}	Send payload defect indication (PDIP) setting on the specified item is inconsistent with that of the specified control node.
EID-3239	The overhead termination is invalid	Refer to error message text.
EID-3240	The maximum number of overhead terminations has been exceeded	Refer to error message text.
EID-3241	The {0} termination port is in use	The specified termination port is in use.
EID-3242	LDCC exists on the selected ports. Please create SDCC one by one.	The line DCC (LDCC) exists on the selected ports. Please create SDCC one by one.
EID-3244	SDCC exists on the selected ports. Please create LDCC one by one.	SDCC exists on the selected ports. Please create LDCC one by one.
EID-3246	{0}	CTC encountered an error.
EID-3247	Ordering error. The absolute value should be {0}	Ordering error. The absolute value should be the number specified.
EID-3248	Wrong parameter is changed: {0}	CTC changed the wrong parameter.
EID-3249	Invalid voltage increment value.	Refer to error message text.
EID-3250	Invalid power monitor range.	Refer to error message text.
EID-3251	Unable to complete requested action. {0}	CTC is unable to complete requested action.
EID-3252	No download has been initiated from this CTC	Refer to error message text.
EID-3253	Reboot operation failed. {0}	The reboot operation failed.
EID-3254	{0}	CTC encountered an error.
EID-3255	Can not change timing configuration, manual/force operation is performed.	Refer to error message text.
EID-3257	Duplicate DCC number detected: {0}.	CTC detected a duplicate DCC number.
EID-3258	There was a software error attempting to download the file. Please try again later.	Refer to error message text.
EID-3259	Create Fcmr Threshold	You must create an FCMR threshold.
EID-3260	Error refreshing page {0}.	There was an error refreshing the specified page.
EID-3261	The port rate provisioning cannot be changed while circuits exist on this port.	CTC does not allow you to change the port rate from 1-Gbps to 2-Gbps if a VCAT STS-24c circuit exists on the port. Software Release 4.6 only supports line-rate SONET circuits.
EID-3262	The port provisioning cannot be changed when the port status is not OOS.	Refer to error message text.
EID-3264	The port provisioning cannot be changed while the port is in service.	Refer to error message text.

Table 4-1 Error Messages (continued)

Error ID	Error Message	Description
EID-3265	Error modifying Protection Group	There was an error modifying the protection group.
EID-3266	Conditions could not be retrieved from the shelf or card view	Refer to error message text.
EID-3267	Cannot edit XTC protection group	Refer to error message text.
EID-3268	Invalid entry. {0}	The entry is invalid.
EID-3269	{0} was successfully initiated for {1} but its completion status was not able to be obtained from the node. {0} may or may not have succeeded. When the node is accessible, check its software version.	The specified task was successfully initiated for the item, but its completion status was not able to be obtained from the node. The task might or might not have succeeded. When the node is accessible, check its software version.
EID-3270	The file {0} does not exist.	The specified file does not exist.
EID-3271	The value entered must be greater than {0}.	The value entered must be greater than the value shown.
EID-3272	Entry required	An entry is required for this task.
EID-3273	{0} already exists in the list.	The specified item already exists in the list.
EID-3290	The ALS Recovery Pulse Width must be between 80.00 seconds and 100.0 seconds.	Refer to error message text.
EID-3291	Cannot Change Revertive Behavior due to an active protection switch	Refer to error message text.
EID-3938	Unable to Perform Operation.	CTC is unable to perform operation.
EID-3939	Wrong Node Side.	This task was applied to the wrong node side.
EID-3940	Name too long.	The name you entered is too long.
EID-3941	Illegal name.	The name you entered is illegal.
EID-3942	Wrong line selection.	You selected the wrong line.
EID-3945	Unable to Delete Optical Link	CTC is unable to delete the optical link.
EID-3946	No NetworkType Available	There is no network type available.
EID-3947	At Least One Equipment Is Not Plugged	At least one equipment is not plugged in.
EID-3948	Apc System Is Busy	Automatic power control (APC) system is busy.
EID-3949	No Path To Regulate	There is no circuit path to be regulated.
EID-3950	Requested action not allowed.	Generic DWDM provisioning failure message.
EID-3951	Wrong input value.	The input value is incorrect.
EID-3952	Error in getting thresholds.	There was an error retrieving the thresholds.
EID-3953	Error applying changes to row {0}. Value out of range.	There was an error applying the changes to the specified row. The value is out of range.
EID-3954	Invalid mode for current configuration.	Refer to error message text.

Table 4-1 Error Messages (continued)

Error ID	Error Message	Description
EID-3955	Unable to switch to the byte because an overhead channel is present on this byte of the port.	Refer to error message text.
EID-3956	Error applying changes to row	There was an error applying changes to the row.
EID-3957	Error on setting expected wavelength	There was an error setting the expected wavelength.
EID-3958	Error on setting expected band	There was an error setting the expected band.
EID-3959	might parameters on Protect Port.	You cannot change timing parameters on protect port.
EID-3960	This port's type cannot be changed SDH validation check failed. Check if this port is part of a circuit, protection group, SONET DCC, orderwire, or UNI-C interface.	This port's type cannot be changed. The SDH validation check failed. Check to see if this port is part of a circuit, protection group, SONET DCC, orderwire, or User Network Interface, client (UNI-C) interface.
EID-3961	getControlMode	The Control Mode must be retrieved.
EID-3962	setGainSetPoint	The Gain Set Point must be set.
EID-3963	getGainSetPoint	The Gain Set Point must be retrieved.
EID-3964	setTiltCalibration	The tilt calibration must be set.
EID-3965	setExpectedWavelength	The expected wavelength must be set.
EID-3966	getExpectedWavelength	The expected wavelength must be retrieved.
EID-3967	getActualWavelength	The actual wavelength must be retrieved.
EID-3968	getActualBand	The actual band must be retrieved.
EID-3969	getExpectedBand	The expected band must be retrieved.
EID-3970	setExpectedBand	The expected band must be set.
EID-3971	Error retrieving defaults from the node {0}.	There was an error retrieving defaults from the specified node.
EID-3972	Cannot load file {0}	CTC cannot load the specified file.
EID-3973	Cannot load properties from the node	CTC cannot load properties from the node.
EID-3974	Cannot save NE Update values to file	CTC cannot save NE Update values to file.
EID-3975	Cannot load NE Update properties from the node	CTC cannot load NE Update properties from the node.
EID-3976	File {0} does not exist.	The specified file does not exist.
EID-3977	Error on setting value at {0}	There was an error setting the value at the specified location.
EID-3978	NoSuchInterface.	No such interface exists in CTC.
EID-3979	EndPointInUse.	The end point is in use.
EID-3980	EndPointIncompatible.	The end point is incompatible.
EID-3981	Unable to call	CTC is unable to call.

Table 4-1 Error Messages (continued)

Error ID	Error Message	Description
EID-3982	Unable to Calculate Connections.	CTC is unable to calculate connections.
EID-3983	OptLinkModel does not exist for index =	The OptLinkModel does not exist for the specified index.
EID-3984	Unable to call ANS.setNodeOpticalParam CannotPerform.	Refer to error message text.
EID-3985	Unable to call ANS.setNodeOpticalParam FeatureUnsupported.	Refer to error message text.
EID-3986	ring termination is in use. Error deleting ring Termination.	Refer to error message text.
EID-3987	Error deleting ring Termination.	There was an error deleting ring termination.
EID-3988	No Ring Terminations selected.	You must select a ring termination.
EID-3989	Error creating Ring ID.	There was an error creating the ring ID.
EID-3990	OSC termination is in use.	The OSC termination is in use.
EID-3991	Error deleting OSC Termination.	There was an error deleting the OSC termination.
EID-3992	No OSC Terminations selected.	There are no OSC terminations selected.
EID-3993	One or more Osc termination could not be created. {0}	The specified OSC termination could not be created.
EID-3994	OSC termination could not be edited.	The OSC termination could not be edited.
EID-3995	No Optical Link selected.	You must select an optical link.
EID-3996	ERROR on calculate automatic optical link list.	There was an error calculating the automatic optical link list.
EID-3997	Attempt to access an Ochnc Connection that has been destroyed.	You attempted to access an OCHNC connection that has been destroyed.
EID-3998	Tunnel Type Could not be changed Do you wish to roll back?	The tunnel type could not be changed. Do you wish to roll back?
EID-3999	Tunnel repair failed	CTC could not repair the tunnel.
EID-9990	Test message with no variable data.	Refer to error message text.
WID-2149	There is nothing exportable on this view.	Refer to error message text.
WID-2150	Node not initialized. Please wait and try again.	Refer to error message text.
WID-2151	Wait until all the circuits have been repaired to begin a bridge and roll operation on the circuits.	Refer to error message text.
WID-2152	Spanning tree protection is being disabled for this circuit.	Refer to error message text.
WID-2153	Adding this drop makes the circuit a PCA circuit.	Refer to error message text.
WID-2154	Disallow creating monitor circuits on a port grouping circuit.	Refer to error message text.
WID-2155	Only partial switch count support on some nodes. {0}	Refer to error message text.
WID-2156	Manual roll mode is recommended for dual rolls. For auto dual rolls, please verify that roll to facilities are in service and error free.	Refer to error message text.

Table 4-1 Error Messages (continued)

Error ID	Error Message	Description
WID-2157	Cannot complete roll(s). {0}	CTC cannot complete the roll(s).
WID-2158	Invalid roll mode. {0}	The selected roll mode is invalid.
WID-2159	Roll not ready for completion. {0}	The roll is not ready for completion.
WID-2160	Roll not connected. {0}	The selected roll is not connected.
WID-2161	Sibling roll not complete. {0}	The sibling roll is not complete.
WID-2162	Error during roll acknowledgement. {0}	There was an error during the roll acknowledgement.
WID-2163	Cannot cancel roll. {0}	CTC cannot cancel the roll.
WID-2164	Roll error. {0}	CTC encountered a roll error.
WID-2165	The MAC address of node {0} has been changed. All circuits originating from or dropping at this node will need to be repaired.	The MAC address of the specified node has been changed. All circuits originating from or dropping at this node need to be repaired.
WID-2166	Unable to insert node into the domain. The node is not initialized.	Refer to error message text.
WID-2167	Insufficient security privilege to perform this action.	You have insufficient security privilege to perform this action.
WID-2168	Warnings loading {0}. {1}	CTC encountered warnings while loading the specified item.
WID-2169	One or more of the profiles selected do not exist on one or more of the nodes selected.	Refer to error message text.
WID-2170	The profile list on node {0} is full. Please delete one or more profiles if you wish to add profile {1}.	The profile list on the specified node is full. Please delete one or more profiles if you wish to add the specified profile.
WID-2171	You have been logged out. Click OK to exit CTC.	Refer to error message text.
WID-2172	The CTC CORBA (IIOP) listener port setting of {0} will be applied on the next CTC restart.	The specified CTC CORBA (IIOP) listener port setting will be applied on the next CTC restart.
WID-2213	The current type or state of some drops does not allow the new circuit state of {0} to be applied to them indirectly.	The current type or state of some drops does not allow the specified new circuit state to be applied to them indirectly.
WID-3243	LDCC exists on the selected port. Please remove one after the connection is created.	Refer to error message text.
WID-3245	SDCC exists on the selected port. Please remove one after the connection is created.	Refer to error message text.

Table 4-1 Error Messages (continued)

Error ID	Error Message	Description
WID-3256	Could not assign timing reference(s) because at least one timing reference has already been used and/or a timing reference has been attempted to be used twice. Please use the "Reset" button and verify the settings.	Refer to error message text.
WID-3263	You are using Java version {0}. CTC should run with Java version {1}. It can be obtained from the installation CD or http://java.sun.com/j2se/	You are using the Java version specified in the first sentence of this message. CTC should run with the Java version specified in the second sentence of this message. The correct Java version can be obtained from the installation CD or at http://java.sun.com/j2se/ .
WID-3274	A software upgrade is in progress. Network configuration changes that results a node reboot can not take place during software upgrade. Please try again after software upgrade is done.	Refer to error message text.
WID-3275	Make sure the Remote Interface ID and the Local Interface ID on the two sides are matched. (Local Interface ID on this node should equal Remote Interface ID on the neighbor node and vice-versa).	Refer to error message text.
WID-3276	Both SDCC and LDCC exist on the same selected port. {0}	Both SDCC and LDCC exist on the same selected port.
WID-3277	The description can't contain more than {0} characters. Your input will be truncated.	Refer to error message text.
WID-3278	{0} is not initialized. Please wait and try again.	The specified object is not initialized. Please wait and try again.
WID-3279	Card Deleted, Returning to shelf View	This card has been deleted. CTC is returning to shelf view.
WID-3280	ALS will not engage until both the protected trunk ports detect LOS	ALS will not engage until both the protected trunk ports detect loss of service (LOS).
WID-3281	A software upgrade is in progress. {0} can not proceed during a software upgrade. Please try again after the software upgrade has completed.	A software upgrade is in progress. The specified operation can not proceed during a software upgrade. Please try again after the software upgrade has completed.
WID-3283	There is a protection switch or another protection operation applied on the ring. Applying this protection operation now will probably cause a traffic outage.	Refer to error message text.
WID-3284	Protection Channel Access circuit found on {0} being set to non-revertive. These circuits will not be able to re-establish after ring or span switch. OK to continue?	Refer to error message text.
WID-3285	Applying FORCE or LOCKOUT operations may result in traffic loss.	Refer to error message text.

Table 4-1 Error Messages (continued)

Error ID	Error Message	Description
WID-3286	The ring status is INCOMPLETE. CTC cannot determine if there are existing protection operations or switches in other parts of the ring. Applying a protection operation at this time could cause a traffic outage. Please confirm that no other protection operations or switches exist before continuing.	Refer to error message text.
WID-3287	There is a protection operation or protection switch present on the ring. Applying this protection operation now will probably cause a traffic outage.	Refer to error message text.
WID-3288	This ring status is INCOMPLETE. CTC will not be able to apply this change to all of the nodes in the {0}.	Refer to error message text.
WID-3289	This node is provisioned to have No LAN Access. Deleting the last DCC may lead to loss of communication with the node. Continue?	Refer to error message text.