



# Manipulate SIP Status-Line Header of SIP Responses

---

- [Manipulat SIP Status-Line Header of SIP Responses, on page 1](#)
- [Copy Incoming SIP Response Status Line to Outgoing SIP Response, on page 2](#)
- [Modify Status-Line Header of Outgoing SIP Response with User Defined Values, on page 5](#)

## Manipulat SIP Status-Line Header of SIP Responses

The SIP status line is a SIP response header, and it can be modified like any other SIP headers of a message. it can either be modified with a user-defined value, or the status line from an incoming response can be copied to an outgoing SIP response. The SIP header keyword used for the response status line is **SIP-StatusLine**.

### Feature Information

The following table provides release information about the feature or features described in this module. This table lists only the software release that introduced support for a given feature in a given software release train. Unless noted otherwise, subsequent releases of that software release train also support that feature.

Use Cisco Feature Navigator to find information about platform support and Cisco software image support. To access Cisco Feature Navigator, go to [www.cisco.com/go/cfn](http://www.cisco.com/go/cfn). An account on Cisco.com is not required.

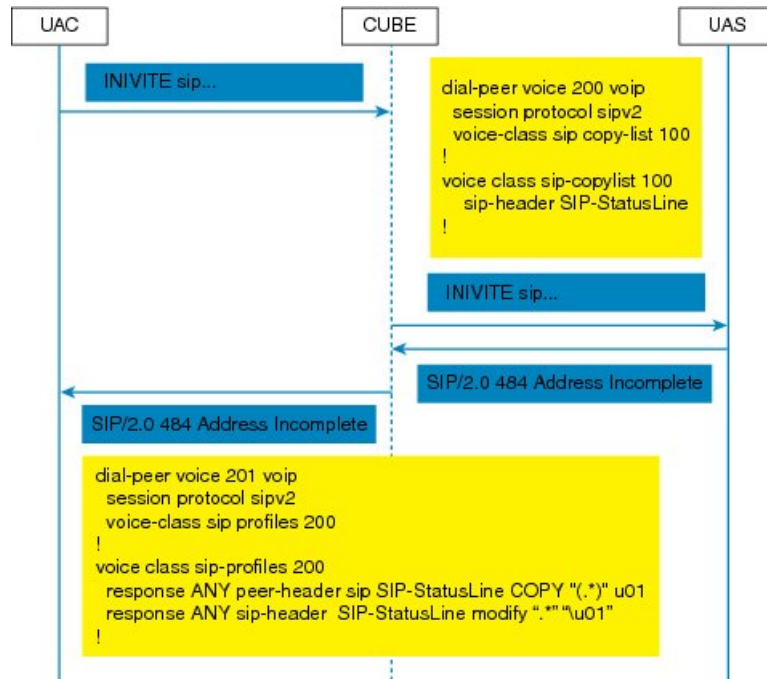
Table 1: Feature Information for Manipulating SIP Responses

Feature Name	Releases	Feature Information
SIP Profile Enhancements for SIP responses and error codes	Baseline Functionality	<p>This feature extends SIP profiles to allow the following:</p> <ul style="list-style-type: none"> <li>• Modification of the outgoing SIP response status line. Previously, only modification of outgoing SIP requests and responses was possible.</li> <li>• Copying of the incoming SIP response status-line. The information from the peer-leg status-line can then be copied to user-variables and applied to the outbound response status-line. This option can be used to pass-thru the error-code and error phrase from peer-leg. Previously, only copying of SIP headers were possible.</li> <li>• Before applying a SIP profile to a response from CUBE, the response can be mapped to its corresponding request.</li> </ul>

## Copy Incoming SIP Response Status Line to Outgoing SIP Response

To copy content from the status line of an incoming SIP response that a device receives to an outgoing response, configure a SIP copylist for SIP status line and apply it to an incoming dial peer. A SIP profile must be configured to copy the status line of an incoming SIP response to a user-defined variable and apply it to an outgoing SIP response.

Figure 1: Call Flow for Copying the Status Line from the Incoming SIP Response to the Outgoing SIP Response



SUMMARY STEPS

1. enable
2. configure terminal
3. voice class sip-copylist tag
4. sip-header SIP-StatusLine
5. exit
6. dial-peer voice inbound-dial-peer-id voip
7. voice-class sip copy-list list-id
8. exit
9. voice class sip-profiles tag
10. response response-code peer-header sip SIP-StatusLine copy match-pattern copy-variable
11. response response-code sip-header SIP-StatusLine modify match-pattern copy-variable
12. exit

DETAILED STEPS

	Command or Action	Purpose
Step 1	enable <b>Example:</b> Device> enable	Enables privileged EXEC mode. <ul style="list-style-type: none"><li>• Enter your password if prompted.</li></ul>
Step 2	configure terminal <b>Example:</b>	Enters global configuration mode.

## Copy Incoming SIP Response Status Line to Outgoing SIP Response

	Command or Action	Purpose
	Device# configure terminal	
<b>Step 3</b>	<b>voice class sip-copylist tag</b> <b>Example:</b> Device(config)# voice class sip-copylist 1	Configures a list of entities to be sent to the peer call leg and enters voice class configuration mode.
<b>Step 4</b>	<b>sip-header SIP-StatusLine</b> <b>Example:</b> Device(config-class)# sip-header SIP-StatusLine	Specifies that the Session Initiation Protocol (SIP) status line header must be sent to the peer call leg.
<b>Step 5</b>	<b>exit</b> <b>Example:</b> Device(config-class)# exit	Exits voice class configuration mode and returns to global configuration mode.
<b>Step 6</b>	<b>dial-peer voice inbound-dial-peer-id voip</b> <b>Example:</b> Device(config)# dial-peer voice 99 voip	Specifies an inbound dial peer and enters dial peer configuration mode.
<b>Step 7</b>	<b>voice-class sip copy-list list-id</b> <b>Example:</b> Device(config-dial-peer)# voice-class sip copy-list 1	Associates the SIP copy list with the inbound dial peer.
<b>Step 8</b>	<b>exit</b> <b>Example:</b> Device(config-dial-peer)# exit	Exits dial peer configuration mode and returns to global configuration mode.
<b>Step 9</b>	<b>voice class sip-profiles tag</b> <b>Example:</b> Device(config)# voice class sip-profiles 10	Enables dial peer-based VoIP SIP profile configurations and enters voice class configuration mode.
<b>Step 10</b>	<b>response response-code peer-header sip SIP-StatusLine copy match-pattern copy-variable</b> <b>Example:</b> Device(config-class)# response ANY peer-header sip SIP-StatusLine copy "(.*)" u01	Copies responses from the corresponding incoming call leg into a copy variable.
<b>Step 11</b>	<b>response response-code sip-header SIP-StatusLine modify match-pattern copy-variable</b> <b>Example:</b> Device(config-class)# response ANY sip-header SIP-StatusLine modify ".*" "\u01"	Modifies an outgoing response using the copy variable defined in the previous step.

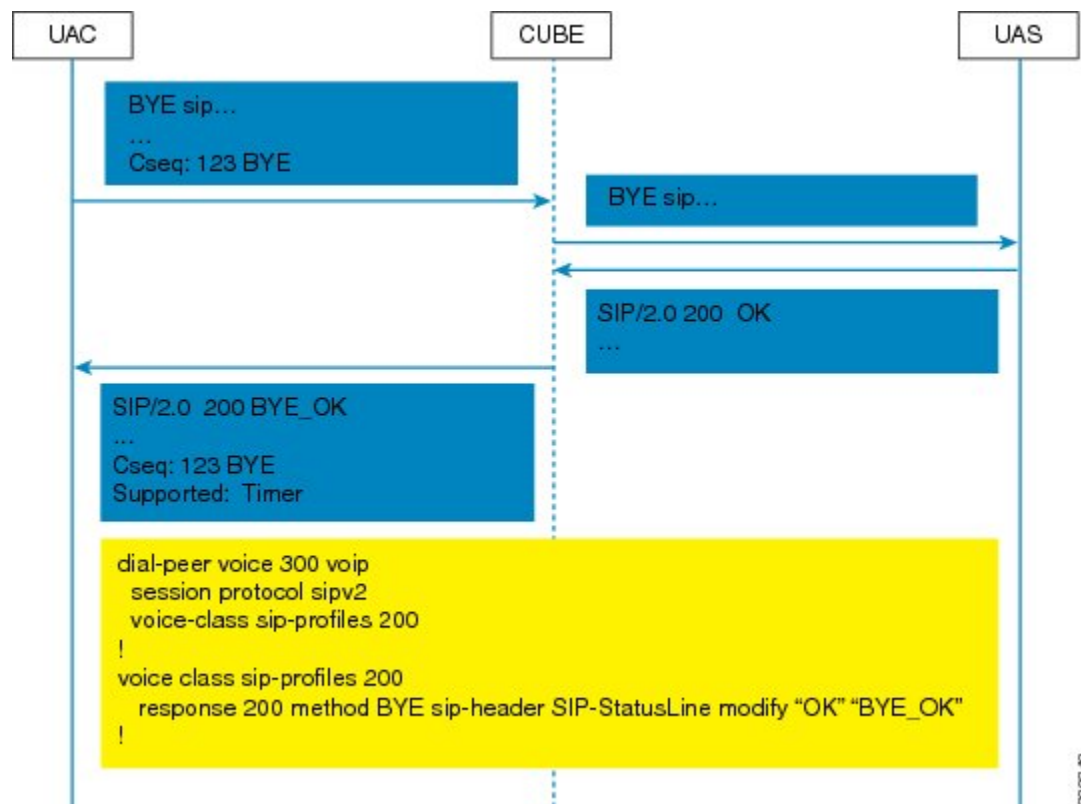
	Command or Action	Purpose
Step 12	<p><b>exit</b></p> <p><b>Example:</b></p> <pre>Device(config-class)# exit</pre>	Exits voice class configuration mode and returns to global configuration mode.

**What to do next**

Apply the SIP profile to the outbound dial peer to copy the SIP response to the outbound leg.

# Modify Status-Line Header of Outgoing SIP Response with User Defined Values

Figure 2: Call Flow Configuring a New Status Line for an Outgoing SIP Response Based on an Incoming SIP Request



**SUMMARY STEPS**

1. enable
2. configure terminal
3. voice class sip-profiles tag

4. **response** *response-code* [**method** *method-type*] **sip-header** **SIP-StatusLine** **modify** *match-pattern*  
*replacement-pattern*
5. **exit**

## DETAILED STEPS

	Command or Action	Purpose
<b>Step 1</b>	<b>enable</b> <b>Example:</b> Device> enable	Enables privileged EXEC mode. <ul style="list-style-type: none"><li>• Enter your password if prompted.</li></ul>
<b>Step 2</b>	<b>configure terminal</b> <b>Example:</b> Device# configure terminal	Enters global configuration mode.
<b>Step 3</b>	<b>voice class sip-profiles</b> <i>tag</i> <b>Example:</b> Device(config)# voice class sip-profiles 10	Enables dial peer-based VoIP SIP profile configurations and enters voice class configuration mode.
<b>Step 4</b>	<b>response</b> <i>response-code</i> [ <b>method</b> <i>method-type</i> ] <b>sip-header</b> <b>SIP-StatusLine</b> <b>modify</b> <i>match-pattern</i> <i>replacement-pattern</i> <b>Example:</b> Modifying status line of a SIP header to a user-defined response type:  Device(config-class)# response 404 sip-header SIP-StatusLine modify "404 Not Found" "404 MyError"	Modifies SIP status line of a SIP response with user-defined values.
<b>Step 5</b>	<b>exit</b> <b>Example:</b> Device(config-class)# exit	Exits voice class configuration mode.

### What to do next

Associate the SIP profile with an outbound dial peer.