

# Install and Configure FindIT Network Manager and FindIT Network Probe on Oracle VM VirtualBox Manager

## Objective

The Cisco FindIT Network Management provides tools that help you easily monitor, manage, and configure your Cisco 100 to 500 Series network devices such as switches, routers, and wireless access points (WAPs) using your web browser. It also notifies you about device and Cisco Support notifications such as the availability of new firmware, device status, network settings updates, and any connected devices that are no longer under warranty or covered by a support contract.

The FindIT Network Management is a distributed application which is comprised of two separate components or interfaces: one or more Probes referred to as FindIT Network Probe and a single Manager called FindIT Network Manager.

An instance of FindIT Network Probe installed at each site in the network performs network discovery, and communicates directly with each Cisco device. In a single site network, you may choose to run a standalone instance of FindIT Network Probe. However, if your network comprises multiple sites, you may install FindIT Network Manager at a convenient location and associate each Probe with the Manager. From the Manager interface, you can get a high-level view of the status of all the sites in your network, and connect to the Probe installed at a particular site when you wish to view a detailed information for that site.

This article provides instructions on how to install and configure FindIT Network Manager and FindIT Network Probe using the Oracle VM VirtualBox Manager.

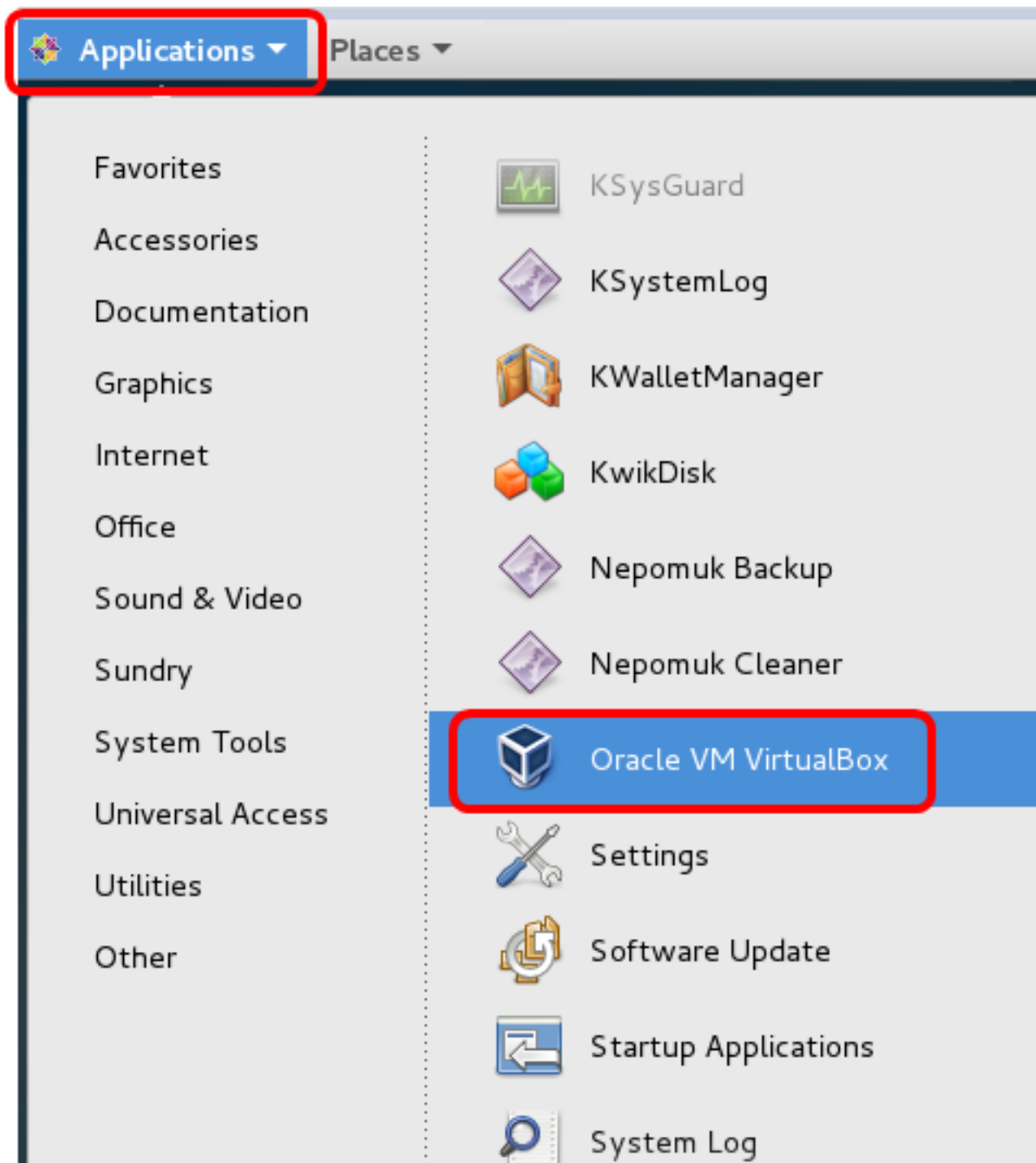
## Install FindIT Network Manager on Oracle VM VirtualBox Manager

### Install FindIT Network Manager

Follow these steps to deploy the Open Virtual Appliance (OVA) Virtual Machine (VM) image to Oracle VM VirtualBox Manager.

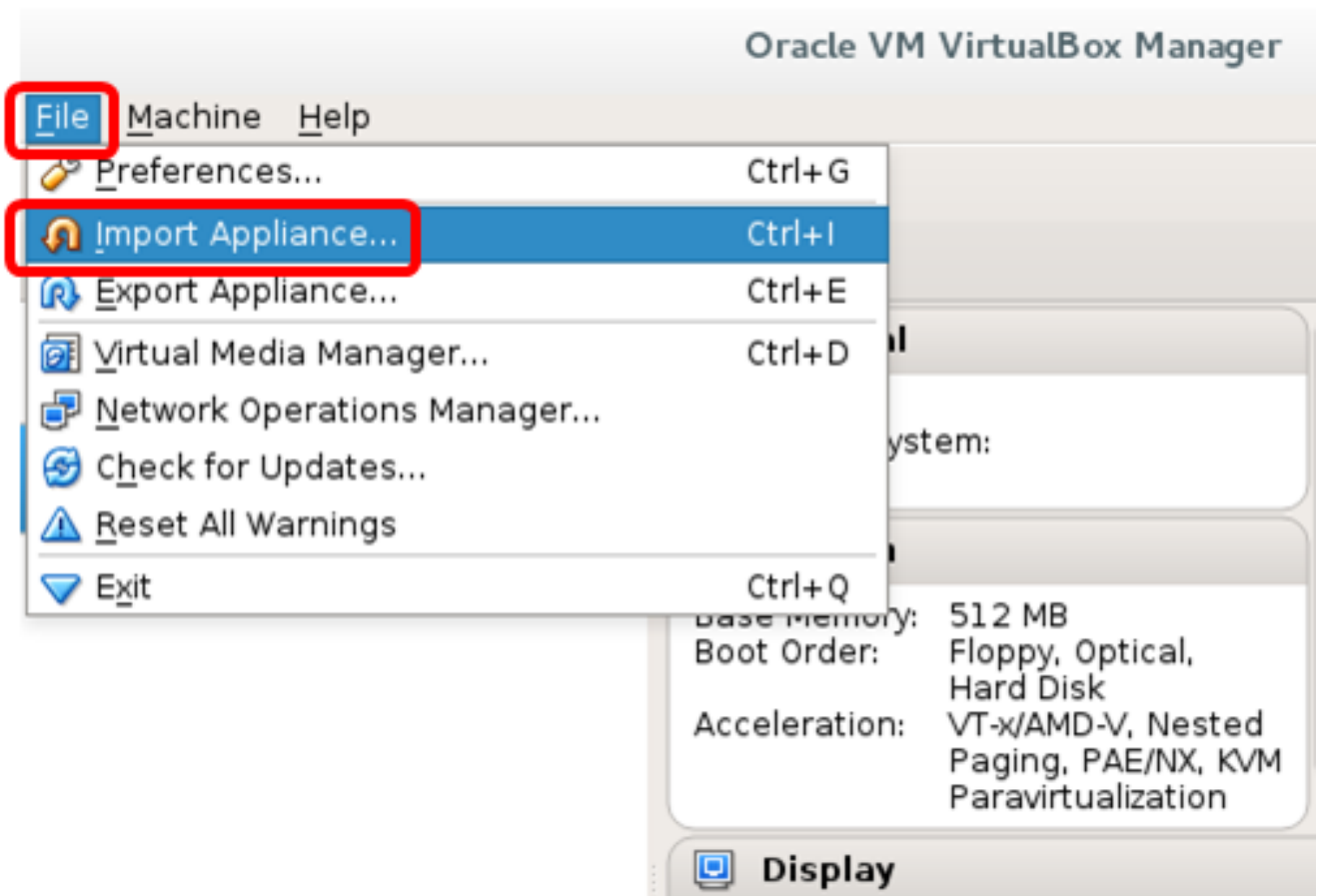
Step 1. Download the FindIT Network Manager OVA VM image from the [Cisco Small Business Site](#).

Step 2. Run Oracle VM VirtualBox Manager on your server or computer.



**Note:** In this example, CentOS 7 operating system is used.

Step 3. Click **File > Import Appliance**.



Step 4. Click the **Browse** button.

## Import Virtual Appliance

### Appliance to import

VirtualBox currently supports importing appliances saved in the Open Virtualization Format (OVF). To continue, select the file to import below.



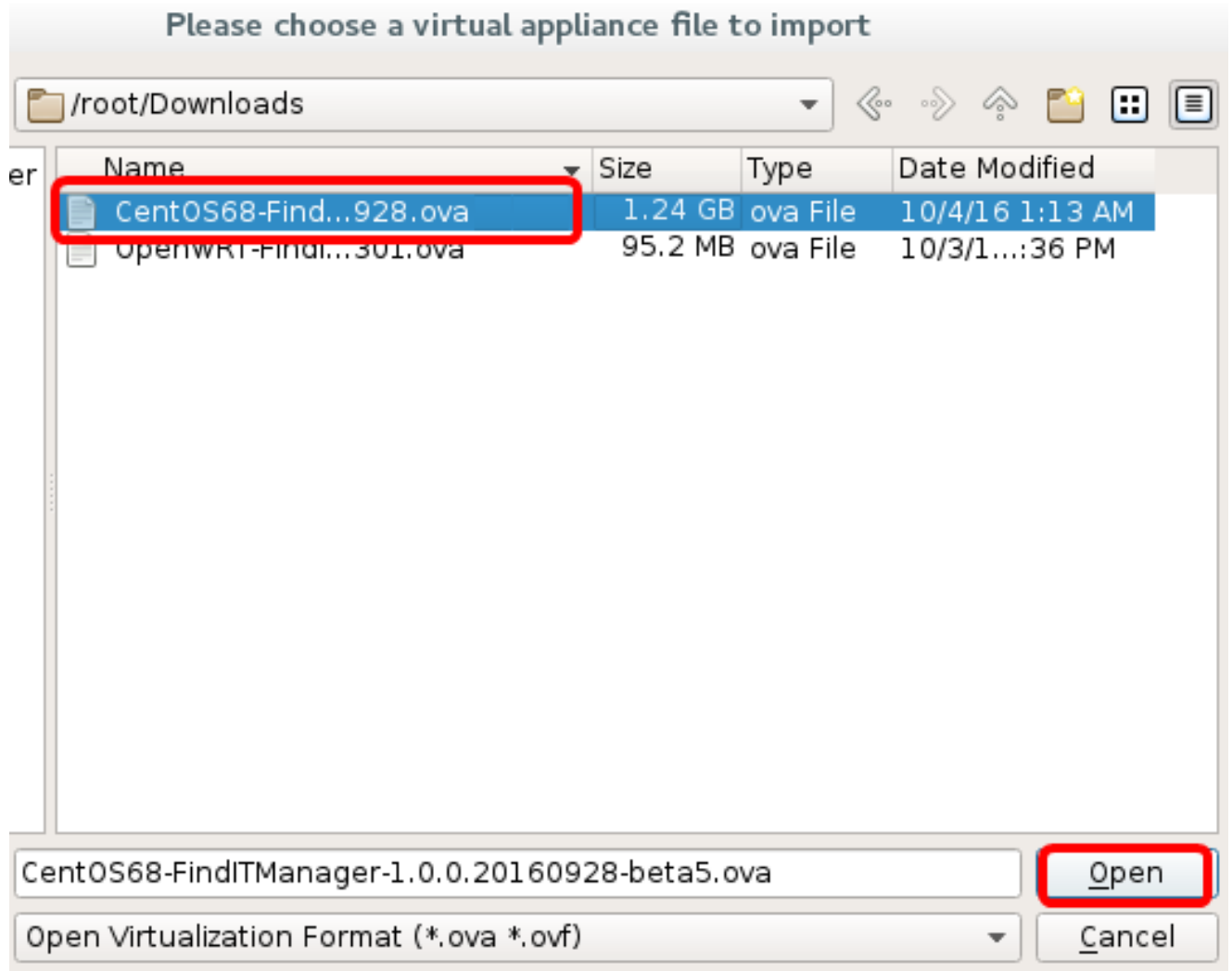
Expert Mode

< Back

Next >

Cancel

Step 5. Click the downloaded OVA image in Step 1, then click **Open**.



Step 6. Click **Next** to continue.

## Import Virtual Appliance

### Appliance to import

VirtualBox currently supports importing appliances saved in the Open Virtualization Format (OVF). To continue, select the file to import below.

Downloads/CentOS68-FindITManager-1.0.0.20160928.ova



Expert Mode

< Back

Next >








Cancel

Step 7. (Optional) Double-click the *Name* field to change the appliance name.

## Import Virtual Appliance

### Appliance settings

These are the virtual machines contained in the appliance and the suggested settings of the imported VirtualBox machines. You can change many of the properties shown by double-clicking on the items and disable others using the check boxes below.

Description	Configuration
Virtual System 1	
 Name	FindIT Network Manager
 Guest OS Type	 Red Hat (64-bit)
 CPU	1
 RAM	2048 MB
 Floppy	<input checked="" type="checkbox"/>
 DVD	<input checked="" type="checkbox"/>

Reinitialize the MAC address of all network cards

Appliance is not signed

Restore Defaults

< Back

Import

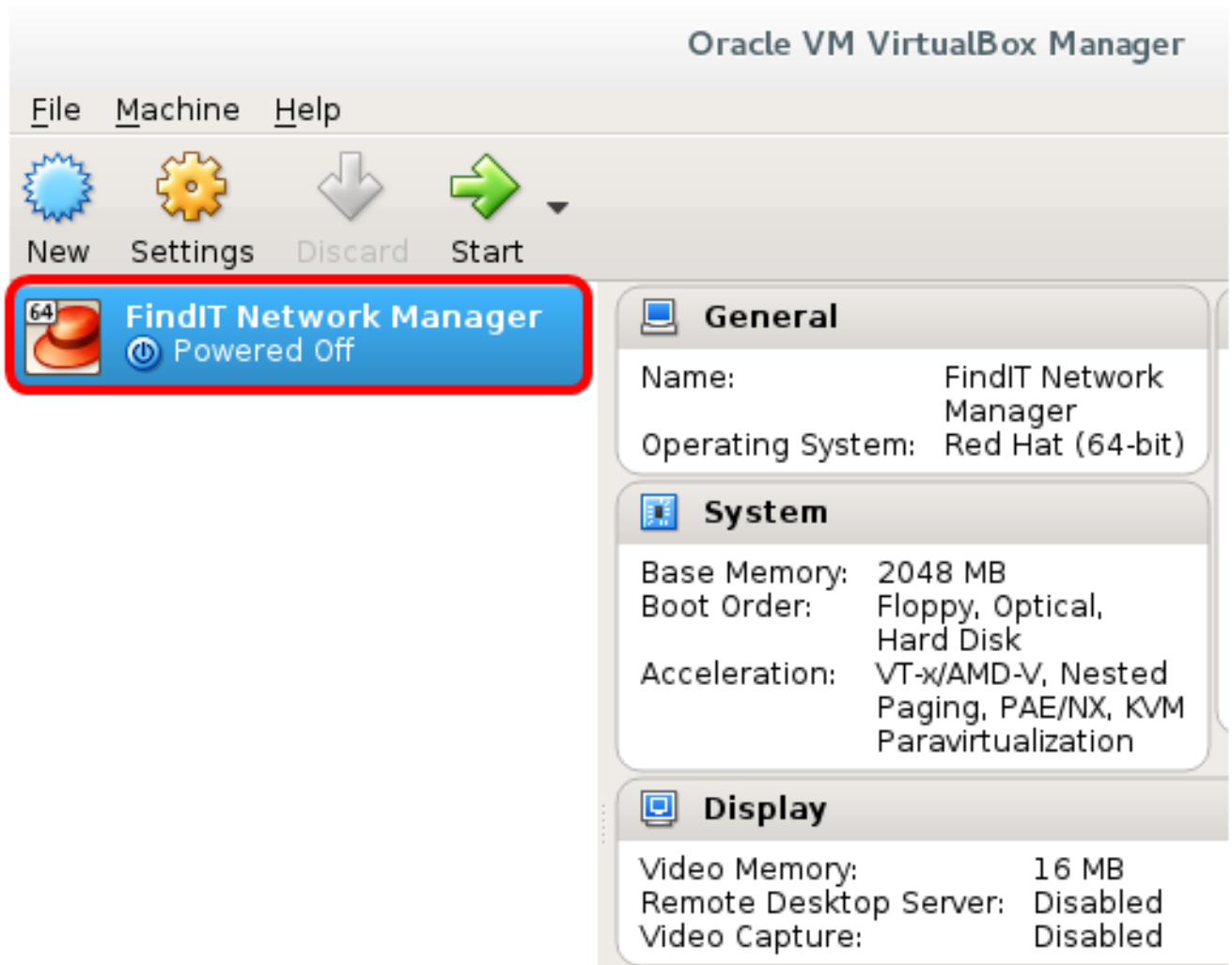
Cancel

**Note:** In this example, FindIT Network Manager is used.

Step 8. Click **Import**.

**Note:** The FindIT Network Manager will be displayed in the list of virtual machines once it has been successfully deployed.

Step 9. On the left panel, click to choose the deployed FindIT Network Manager appliance.



Step 10. Click **Start** to access the console of the VM.

## Configure the Deployed FindIT Network Manager

Once deployment of the FindIT Network Manager is completed using your preferred virtual machine, follow the steps below to configure the VM.

Step 1. Access the console of the FindIT Network Manager VM.

Step 2. Log in to the console using the default username and password: cisco/cisco.

```
FindITManager login: cisco  
Password: cisco
```

Step 3. Once you are prompted to change the password for the cisco account, enter the current password.



```
CentOS release 6.8 (Final)
Kernel 2.6.32-642.3.1.el6.x86_64 on an x86_64

FindITManager login: cisco
Password:
You are required to change your password immediately (root enforced)
Changing password for cisco.
(current) UNIX password:
```

Step 4. Enter and retype the new password for the cisco account.

```
CentOS release 6.8 (Final)
Kernel 2.6.32-642.3.1.el6.x86_64 on an x86_64

FindITManager login: cisco
Password:
You are required to change your password immediately (root enforced)
Changing password for cisco.
(current) UNIX password:
New password:
Retype new password: _
```

The DHCP IP Address and Administration GUI addresses will be displayed.

```
CentOS release 6.8 (Final)
Kernel 2.6.32-642.3.1.el6.x86_64 on an x86_64

FindITManager login: cisco
Password:
You are required to change your password immediately (root enforced)
Changing password for cisco.
(current) UNIX password:
New password:
Retype new password:

-----
FindIT Manager (1.0.0.20160928-beta)
Powered by CentOS release 6.8 (Final)

IP Address: 192.168.1.101      Administration GUI: https://192.168.1.101
Enter 'sudo config_om' to change platform settings and set a static IP a
-----
[cisco@FindITManager ~]$ _
```

**Note:** In this example, the IP Address of FindIT Network Manager is 192.168.1.101 and the Administration GUI address is https://192.168.1.101.

Step 5. Enter the **sudoconfig\_vm** command to start the initial setup wizard.

```
[cisco@FindITManager cisco]$ sudo config_vm
```

Step 6. Enter the password for sudo. The default password is cisco. If you changed it, enter the new password.

```
[cisco@FindITManager ~]$ cd /opt/cisco  
[cisco@FindITManager cisco]$ sudo config_vm  
[sudo] password for cisco:
```

Step 7. Enter **y** for Yes or **n** for No in the setup wizard to configure the Hostname, Network, NTP server, and Time Zone.

```
Config a hostname ? (y/n) : y
```

Step 8. (Optional) If DHCP is specified when configuring network, enter the **ifconfig** command to check the assigned IP address and remember it. A static IP can also be configured.

```
[cisco@FindITManager cisco]$ ifconfig
```

You should now have completed the FindIT Network Manager installation on your VM.

To learn how to access and configure the initial settings of the FindIT Network Manager, click [here](#) for instructions.

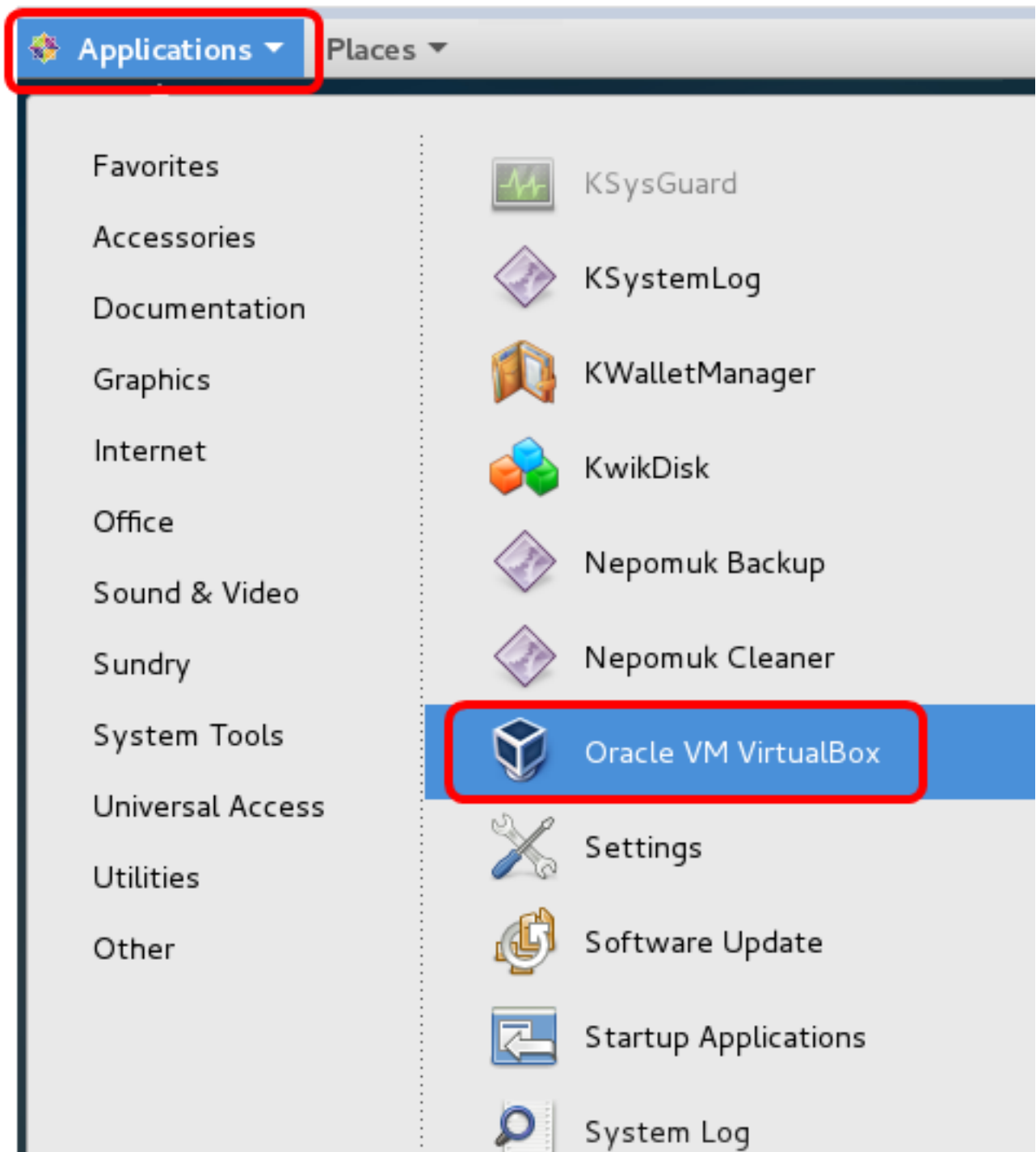
## Install FindIT Network Probe on Oracle VM VirtualBox Manager

### Install FindIT Network Probe

Follow these steps to deploy the OVA VM image to Oracle VM VirtualBox Manager.

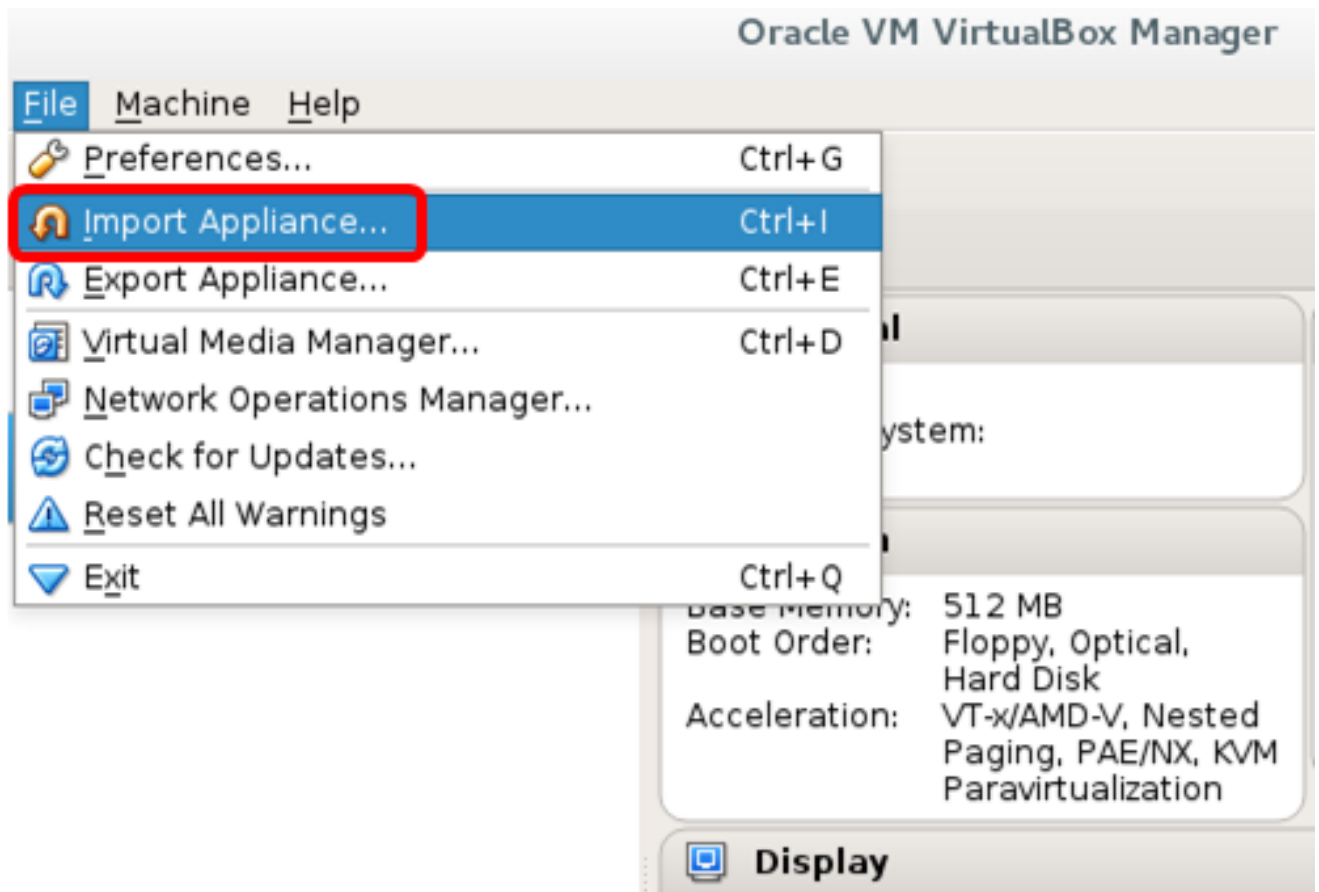
Step 1. Download the FindIT Network Probe OVA VM image from the [Cisco Small Business Site](#).

Step 2. Run VirtualBox Manager on your server or computer.



**Note:** In this example, CentOS 7 operating system is used.

Step 3. Click **File > Import Appliance**.



Step 4. Click the **Browse** button.

## Import Virtual Appliance

### Appliance to import

VirtualBox currently supports importing appliances saved in the Open Virtualization Format (OVF). To continue, select the file to import below.

A red square icon representing a file selection or folder icon, located at the right end of the text input field.

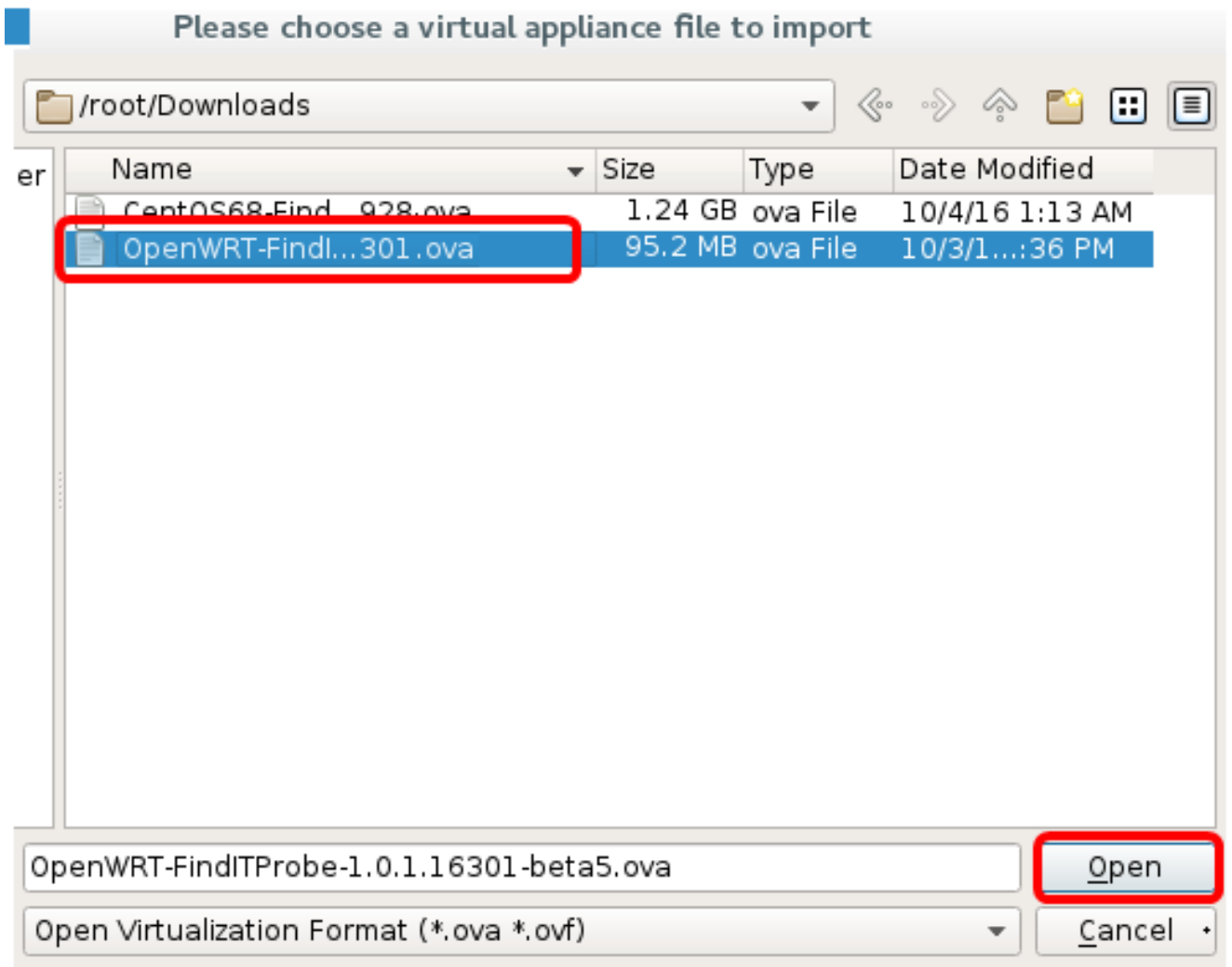
Expert Mode

< Back

Next >

Cancel

Step 5. Click the downloaded OVA image in Step 1, then click **Open**.



Step 6. Click **Next** to continue.

## Import Virtual Appliance

### Appliance to import

VirtualBox currently supports importing appliances saved in the Open Virtualization Format (OVF). To continue, select the file to import below.

/root/Downloads/OpenWRT-FindITProbe-1.0.1.16301.ova



Expert Mode

< Back

Next >








Cancel

Step 7. (Optional) Double-click the *Name* field to change the appliance name.

## Import Virtual Appliance

### Appliance settings

These are the virtual machines contained in the appliance and the suggested settings of the imported VirtualBox machines. You can change many of the properties shown by double-clicking on the items and disable others using the check boxes below.

Description	Configuration
Virtual System 1	
 Name	FindIT Network Probe
 Guest OS Type	 Linux 2.6 / 3.x / 4.x (64-bit)
 CPU	1
 RAM	512 MB
 Network Adapter	<input checked="" type="checkbox"/> Intel PRO/1000 MT Desktop (...)
 Storage Controller (IDE)	PIIX4

Reinitialize the MAC address of all network cards

Appliance is not signed

Restore Defaults

< Back

Import

Cancel

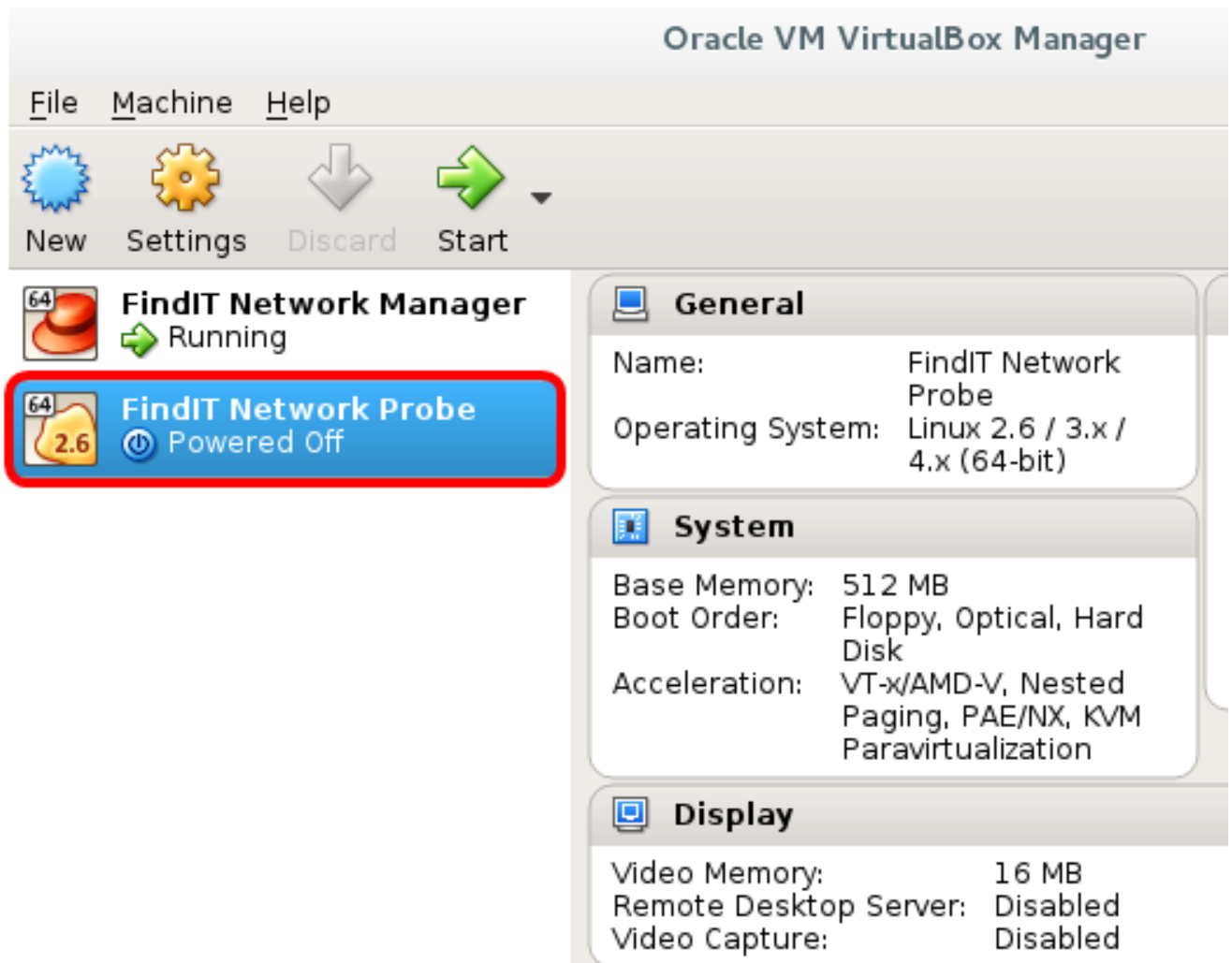
**Note:** In this example, FindIT Network Probe is used.

Step 8. Click **Import**.

**Note:** The FindIT Network Probe will be displayed in the list of virtual machines once it has been successfully deployed.

Step 9. On the left panel, click to choose the deployed FindIT Network Probe appliance.





Step 10. Click **Start** to access the console of the VM.

### **Configure the Deployed FindIT Network Probe**

Once deployment is finished, follow the steps below to configure the VM.

Step 1. Access the console of the FindIT Network Probe VM.

Step 2. Log in to the console using the default username and password: cisco/cisco.

**FindITProbe login: cisco**

**Password: cisco**

You will be prompted to change the password for the cisco account. The DHCP IP Address and Administration GUI addresses will be displayed.

```
BusyBox v1.23.2 (2016-09-02 17:15:18 CST) built-in shell (ash)

-----
FindIT Probe (1.0.1.16301)
Powered by OpenWrt CHAOS CALMER (15.05, r47955)

IP Address: 192.168.1.102   Administration GUI: https://192.
Enter 'config_vm' to change platform settings and set a stati
-----

Changing password for cisco
New password: _
```

**Note:** In this example, the IP Address of FindIT Network Probe is 192.168.1.102.

Step 3. Enter and retype the new password for the cisco account.

```
Changing password for cisco
New password:
Retype password:
Password for cisco changed by cisco
cisco@FindITProbe:~# _
```

Step 4. (Optional) Enter the **ifconfig** command to find the IP address of FindIT Network Probe.

```
cisco@FindITProbe:~# ifconfig
eth0      Link encap:Ethernet  HWaddr 00:0C:29:6F:2E:DD
          inet addr:192.168.1.102  Bcast:192.168.1.255  Mask:
          inet6 addr: fe80::20c:29ff:fe6f:2edd/64 Scope:Link
          inet6 addr: fec0::20c:29ff:fe6f:2edd/64 Scope:Site
          UP BROADCAST RUNNING MULTICAST  MTU:1500  Metric:1
          RX packets:149596 errors:0 dropped:0 overruns:0 fra
          TX packets:205206 errors:0 dropped:0 overruns:0 car
          collisions:0 txqueuelen:1000
          RX bytes:26494354 (25.2 MiB)  TX bytes:183876308 (1
lo        Link encap:Local Loopback
          inet addr:127.0.0.1  Mask:255.0.0.0
          inet6 addr: ::1/128 Scope:Host
          UP LOOPBACK RUNNING  MTU:65536  Metric:1
          RX packets:73994 errors:0 dropped:0 overruns:0 fram
          TX packets:73994 errors:0 dropped:0 overruns:0 carr
          collisions:0 txqueuelen:0
          RX bytes:33273411 (31.7 MiB)  TX bytes:33273411 (31
```

You should now have configured FindIT Network Probe on your machine.

To learn how to access and configure the initial settings of the FindIT Network Probe, click [here](#) for instructions. To learn how to associate the FindIT Network Probe to the FindIT Network Manager, click [here](#) for instructions.