

Troubleshoot Common BGP Issues

Contents

[Introduction](#)

[Prerequisites](#)

[Requirements](#)

[Components Used](#)

[Conventions](#)

[Background Information](#)

[Main Troubleshoot Flowchart](#)

[Troubleshoot BGP Neighbor Establishment](#)

[Troubleshoot Routes Missing from the Routing Table](#)

[Troubleshoot Multihoming Inbound](#)

[Troubleshoot BGP Route Advertisement](#)

[Troubleshoot Multihoming Outbound](#)

[Related Information](#)

Introduction

This document describes how to troubleshoot common issues with Border Gateway Protocol (BGP).

Prerequisites

Requirements

There are no specific requirements for this document.

Components Used

This document is not restricted to specific software and hardware versions.

The information in this document was created from the devices in a specific lab environment. All of the devices used in this document started with a cleared (default) configuration. If your network is live, ensure that you understand the potential impact of any command.


Conventions

For more information on document conventions, see the [Cisco Technical Tips Conventions](#).

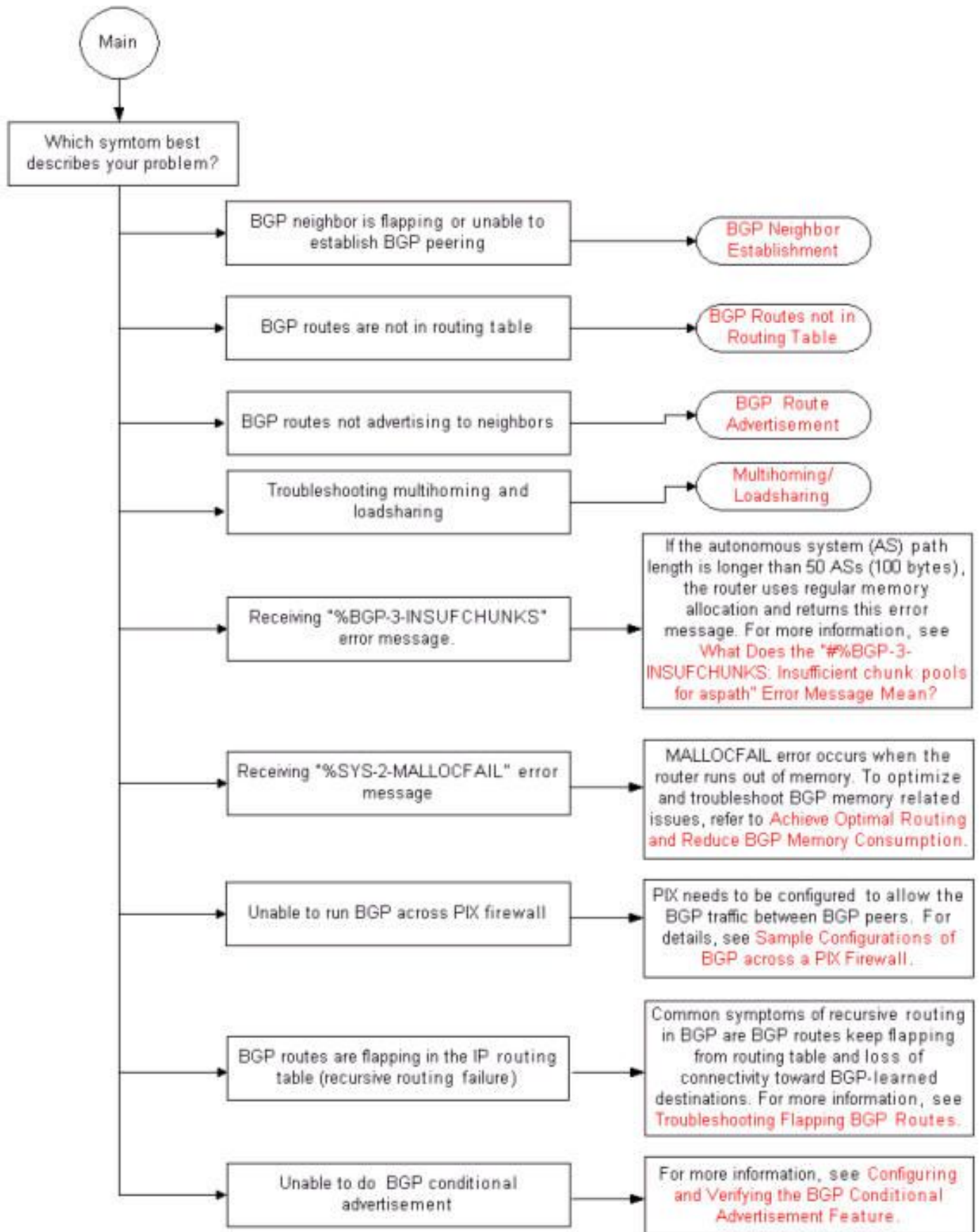
Background Information

This document provides flowcharts for several options to troubleshoot BGP issues.

If you have the output of a **show ip bgp** , **show ip bgp neighbors** , **show ip bgp summary** , or **show tech-support** command from your Cisco device, you can use [Cisco CLI Analyzer](#) to display potential issues and fixes. To use Cisco CLI Analyzer, you must be a registered Cisco user.

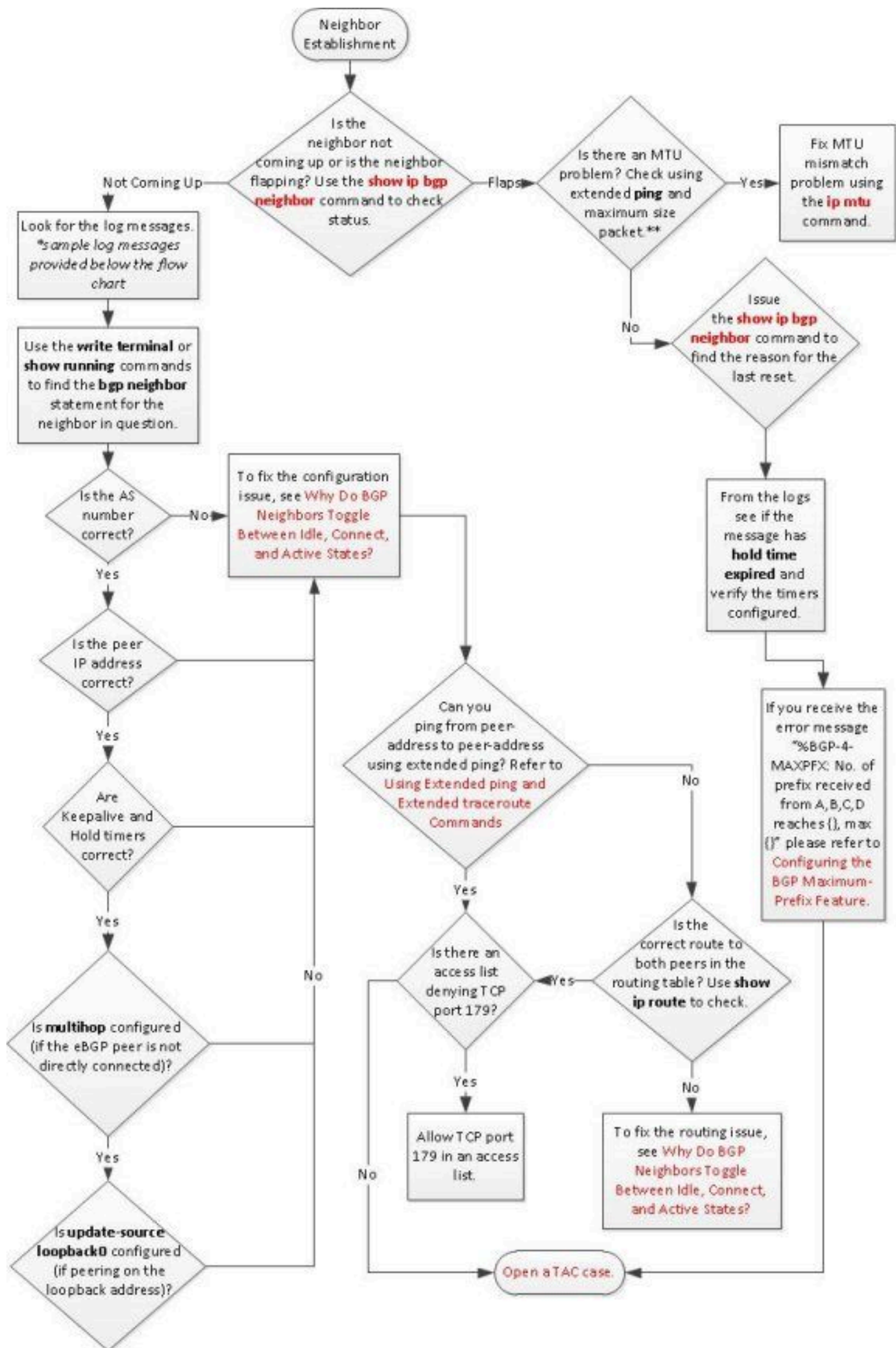
 **Note:** Only registered Cisco users can access internal tools and information.


Main Troubleshoot Flowchart



BGP Main Flowchart

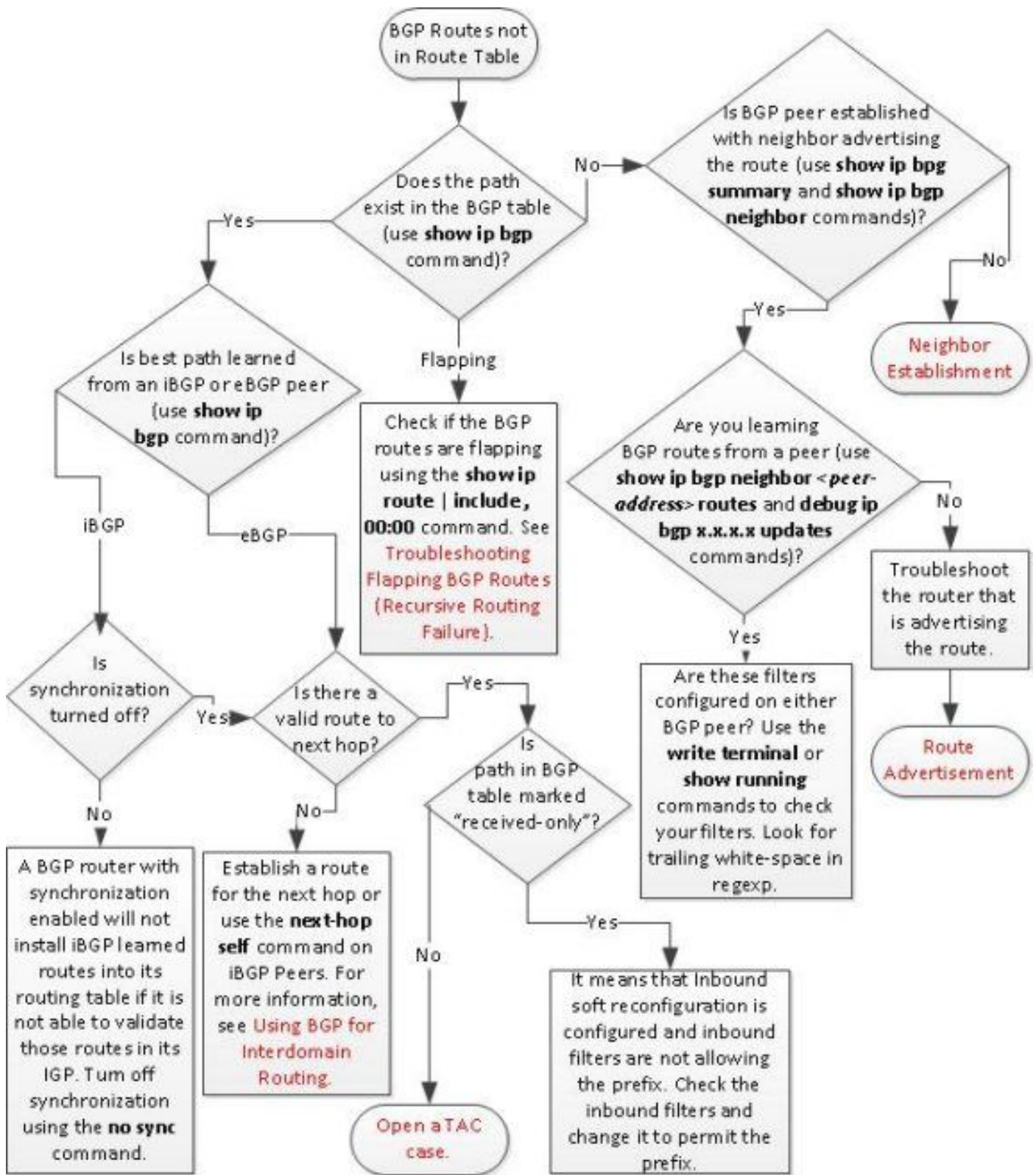
Troubleshoot BGP Neighbor Establishment



 command. By default, BGP resets the neighborship if the link used in order to reach the neighbor goes down. Disable this feature under BGP Configuration in order to keep BGP stable and prevent the interface from flapping.

If flapping occurs due to high CPU, refer to [Troubleshooting High CPU Utilization on Cisco Routers](#).

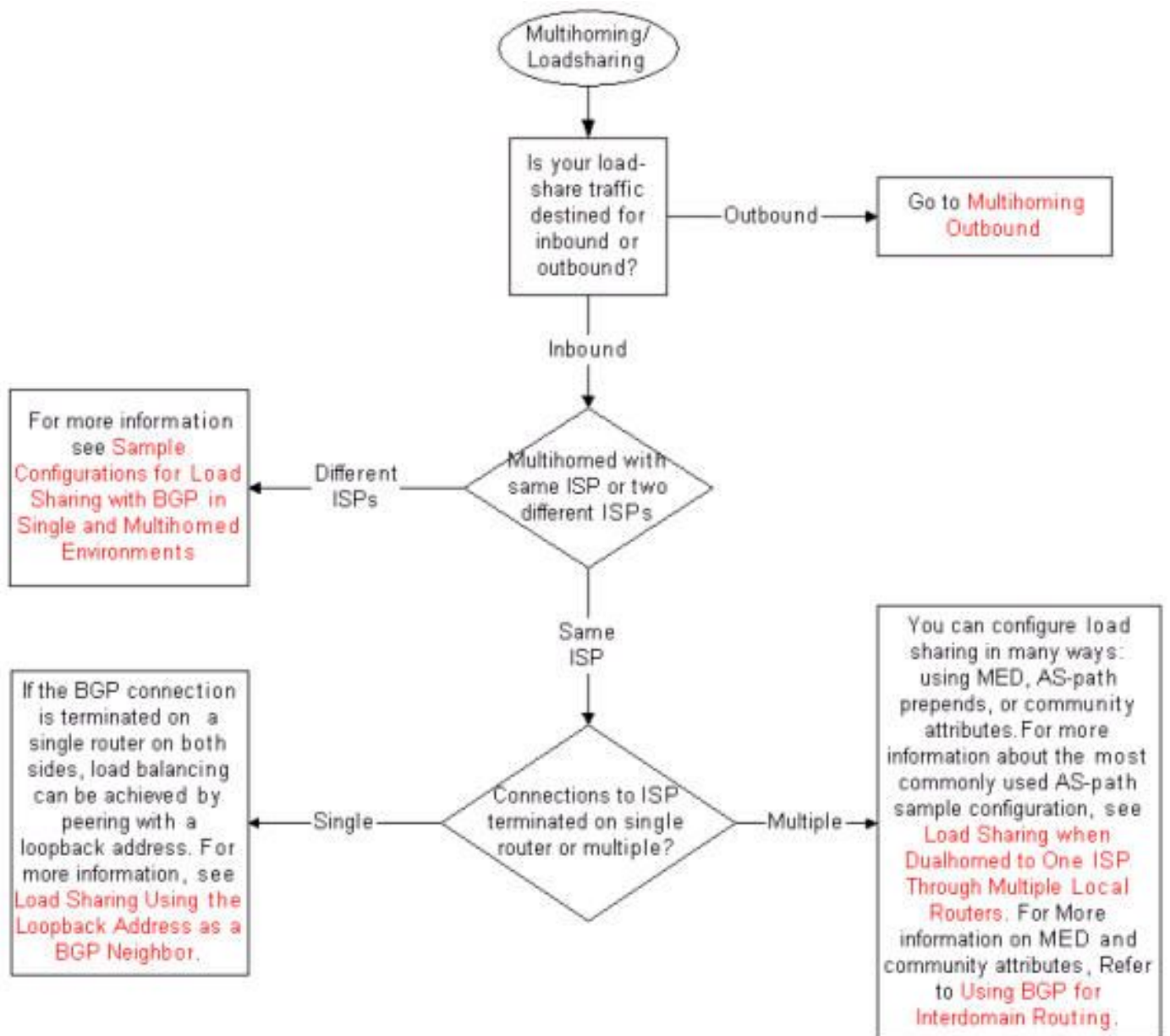
Troubleshoot Routes Missing from the Routing Table



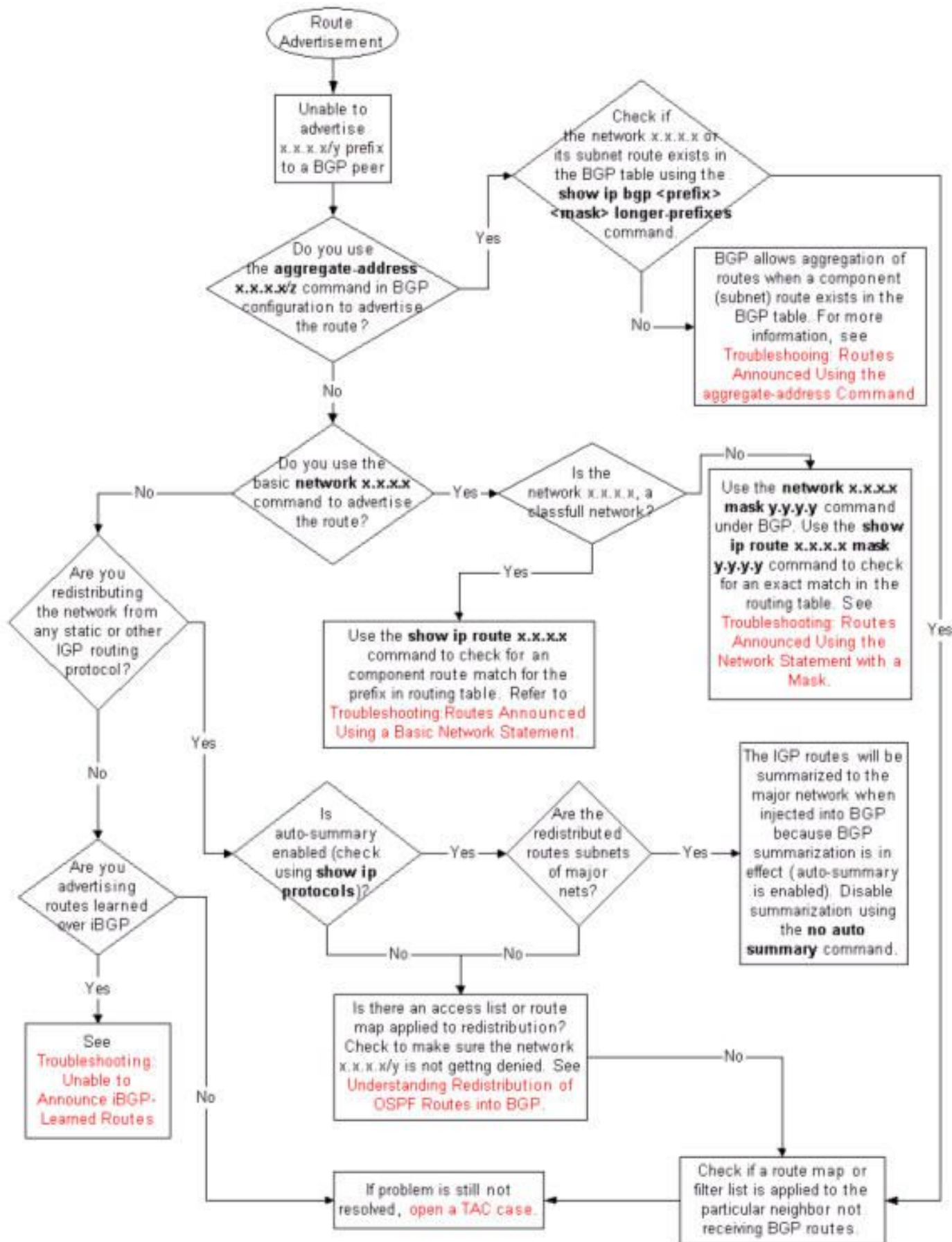
Note: If the BGP routes are not in the routing table, verify if the network statement under the BGP configuration is correct.

Note: In the `debug ip bgp x.x.x.x updates` command, `x.x.x.x` is the neighbor to which the route must be advertised.

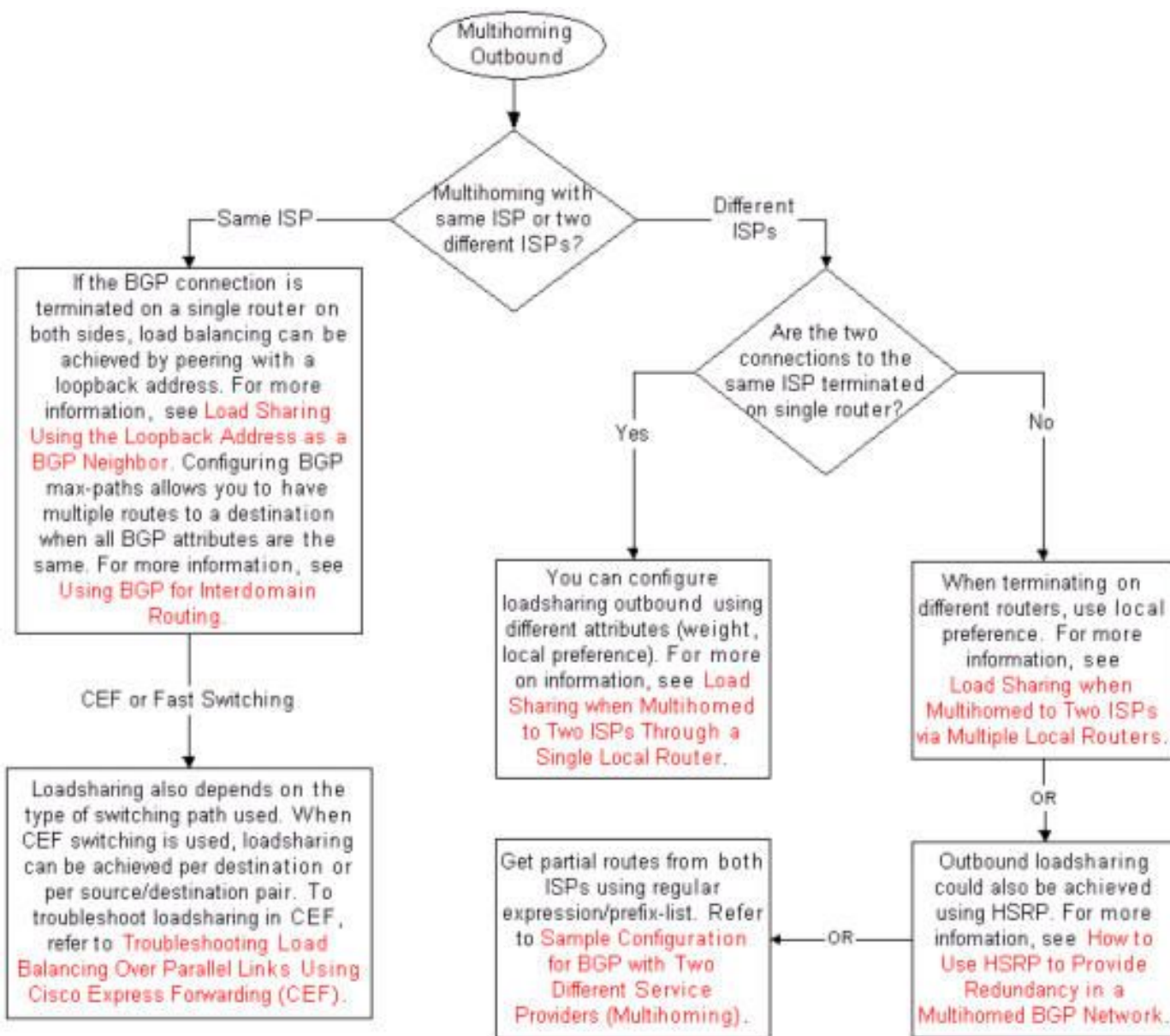
Troubleshoot Multihoming Inbound



Troubleshoot BGP Route Advertisement



Troubleshoot Multihoming Outbound



Related Information

- [BGP & IP Routing Support](#)
- [Cisco IOS Primary Command List, All Releases](#)
- [Technical Support & Downloads - Cisco Systems](#)