

Quick Start

vEdge 100 Router

Package Contents

- Router chassis
- AC power cords for your geographical location
- USB cable for console
- Rack-mount ears and screws
- Wall-mount plate and screws
- Quick Start document

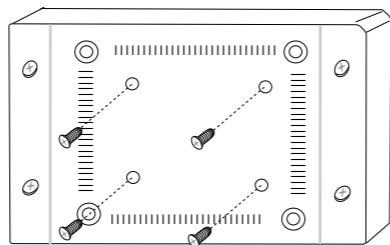
Safety Warnings

Before installing the router or connecting it to a power source, read the planning and installation instructions at: https://docs.viptela.com/03vEdge_Hardware/02vEdge_100_Router.

Failure to observe these safety warnings can result in personal injury or death.

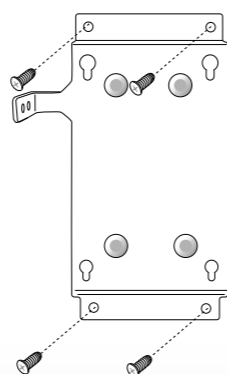
1 Step

Screw the four A screws into the pre-drilled holes on the underside of the router chassis.



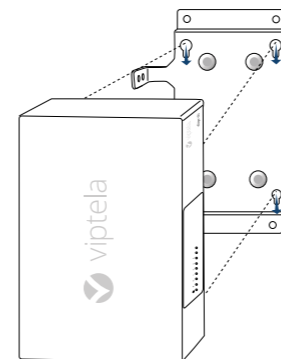
2 Step

Placing the L-shaped bracket to the upper left, secure the mounting plate into the wall (screws not provided).



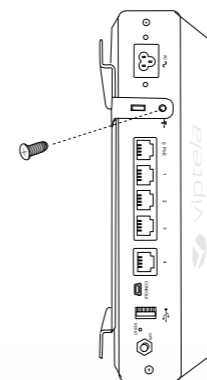
3 Step

Align the four screws on the underside of the router chassis to the holes in the mounting plate. Then gently slide the router chassis down.



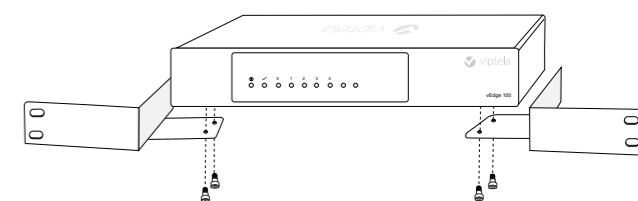
4 Step

Align the round hole on the L-shaped bracket of the mounting plate with the screw hole in the rear of the router chassis, and screw the bracket to the router.



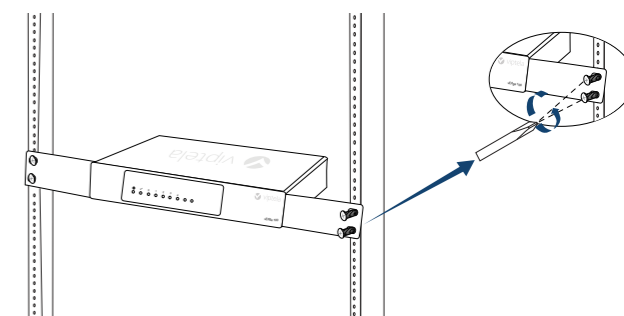
1 Step

Secure the left and right mounting ears to either side of the router chassis using the TBD screws in the packet C.



2 Step

Lift and position the router in the rack. Then secure the mounting ears to the two front posts of the rack using the rack-mount TBD screws in the packet D.



See back for more info

Initial Configuration

1 Step

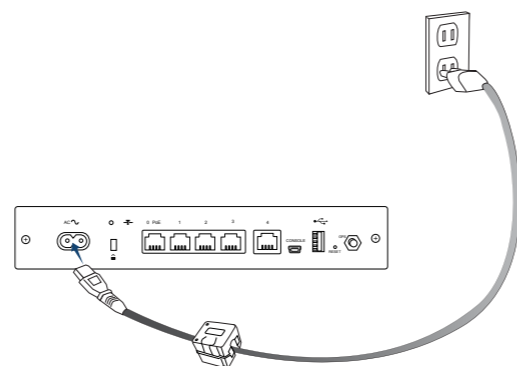
Configure the vEdge router:

- From vManage > Configuration > Devices > vEdge List, upload the vEdge authorized serial number file.
- From vManage > Configuration > Certificates > vEdge List:
 - Check that the router's chassis and serial number are in the vEdge list.
 - Authorize each router by clicking Valid in the Validate column.
 - Click Send to Controller to send the vEdge list to the controller devices.
- From vManage > Configuration > Templates:
 - Create a configuration template for the vEdge router.
 - Attach the router to the configuration template.

2 Step

Connect AC power to the vEdge router:

Plug one end of the power cord into the AC power inlet of the router.



3 Step

Boot the vEdge router:

From vManage > Dashboard or from vManage > Network > Device Dashboard, verify that the vEdge router is operational.



Quick Start

vEdge 100B Router

Package Contents

- Router chassis
- USB console cable
- Mounting ears, left and right
- Mounting-ear screws (Packet A)
- Rack-mount screws (Packet B)
- AC power adapter and connectors
- Quick Start document

For complete documentation, see https://sdwan-docs.cisco.com/Product_Documentation

Safety Standards

Before installing the routers or connecting it to a power source, read the planning and installation instructions for your hardware platform at: https://sdwan-docs.cisco.com/Product_Documentation/vEdge_Routers
Failure to observe these safety warnings can result in personal injury or death.

Rack Mount

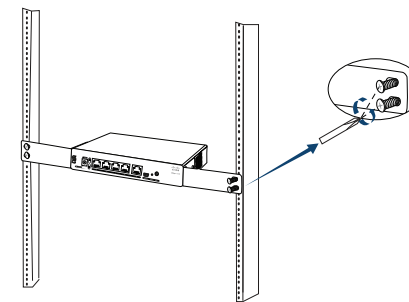
1 Step

Secure the left and right mounting ears to either side of the router chassis using the screws in Packet A



2 Step

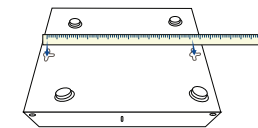
Lift and position the router in the rack. Then secure the mounting ears to the front posts of the rack using the screws in Packet B.



Wall Mount

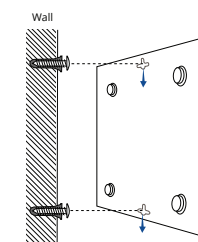
1 Step

Insert two wall-mount screws in the wall where you are mounting the router (screws not provided). The screws must align with the wall-mount holes on the underside of the router chassis.



2 Step

Align the wall-mount holes on the router's underside to the screws in the wall, and gently slide the chassis, from side to side or up and down, onto the wall-mount screws.



See back for more information

Initial Configuration

1 Step

Configure the vEdge router:

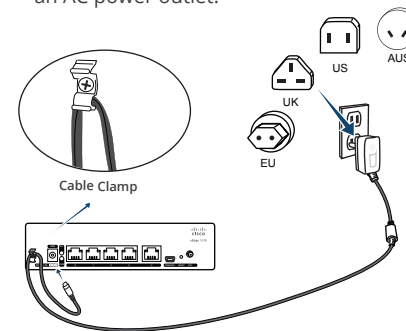
- 1 From vManage > Configuration > Devices > WAN Edge List, upload the WAN Edge authorized serial number file.
- 2 From vManage > Configuration > Certificates > WAN Edge List:
 - a. Check that the router's chassis and serial number are in the WAN Edge list.
 - b. Authorize the router by clicking Valid in the Validate column.
 - c. Click Send to Controllers to send the WAN Edge list to the controller devices.
- 3 From vManage > Configuration > Templates:
 - a. Create a device template for the vEdge router.
 - b. Attach the router to the device template.

Initial Configuration

2 Step

Boot the vEdge router:

- 1 Plug one end of the power adapter cord into the front of the router.
- 2 Secure the cord in place by loosening the cable clamp screw, tucking the cord under the clamp, and then tightening the screw.
- 3 Insert the appropriate connector for your geographical location into the other end of the cord. Then plug the cord into an AC power outlet.



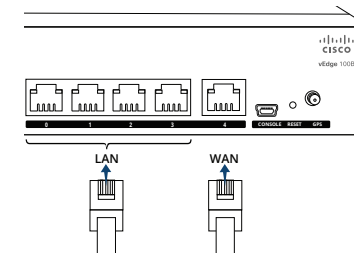
Caution: If you are connecting AC power to the router, it is recommended that the building have an external surge protective device installed.

Initial Configuration

3 Step

Connect LAN and WAN interfaces :

- 1 Connect to the LAN by plugging the appropriate cable into any port, except port 4, on the front of the router.
- 2 Connect to a WAN by plugging the appropriate cable into port 4 on the front of the router.



4 Step

Verify vEdge router status:

From vManage > Dashboard or from vManage > Monitor > Network > Device Dashboard, verify that the vEdge router is operational.



Quick Start

vEdge 100M Router

Package Contents

- Router Chassis
- Two multiband dipole antennas
- AC power cord appropriate for your geographical location
- USB console cable
- Wall-mount plate
- Quick Start document

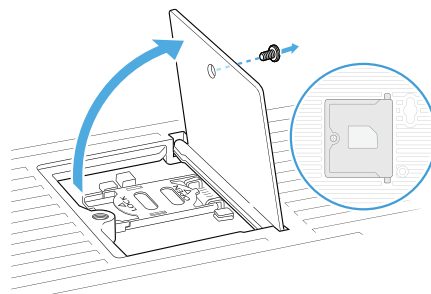
For complete documentation, see https://sdwan-docs.cisco.com/Product_Documentation

Safety Standards

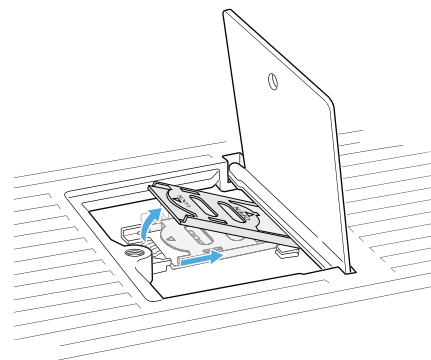
Before installing the router or connecting it to a power source, read the planning and installation instructions for your hardware platform at: https://sdwan-docs.cisco.com/Product_Documentation/vEdge_Routers
Failure to observe these safety warnings can result in personal injury or death.

A. Install the SIM Card

- 1 Unscrew the socket cover and open it.

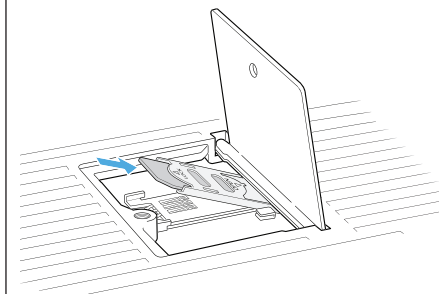


- 2 Slide the SIM card holder cover towards the socket cover hinge and open it.

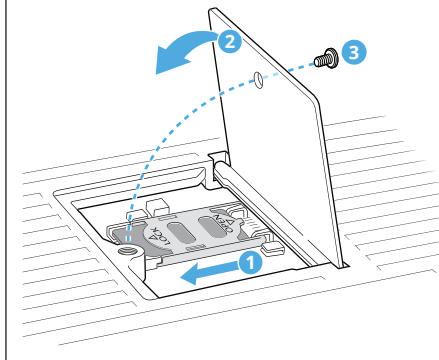


A. Install the SIM Card

- 3 Insert the SIM card firmly into the socket.

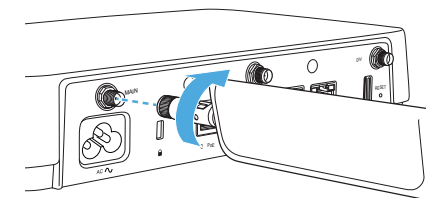


- 4 Close the SIM card holder cover. Then close the socket cover and screw it shut.

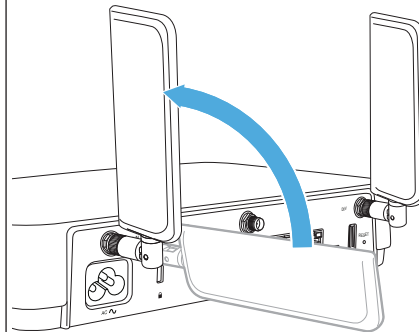


B. Attach the Antennas

- 1 Screw one antenna into the terminal marked MAIN and the other into the terminal marked DIV.

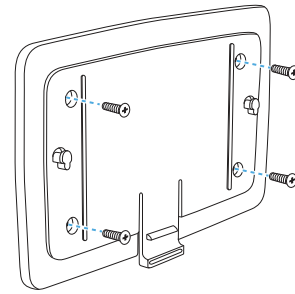


- 2 Turn each antenna so that it is vertical.

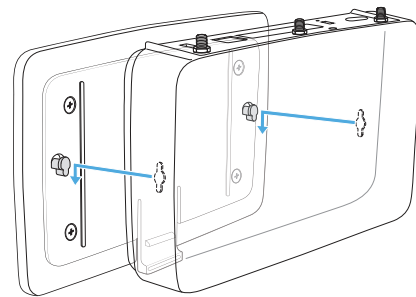


C. Mount the Router on the Wall

- 1 Secure the mounting plate to the wall (screws not provided).



- 2 Align the two slots on the underside of the router chassis to the notches in the mounting plate. Then gently slide the router chassis down onto the notches.



D. Initial Configuration

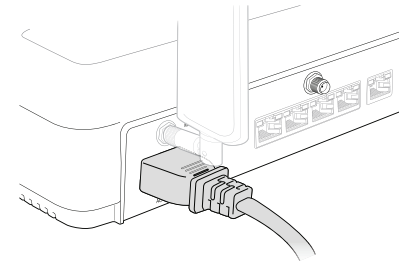
- 1 Configure the vEdge router:

- a From vManage > Configuration > Devices > WAN Edge List, upload the WAN Edge authorized serial number file.
- b From vManage > Configuration > Certificates > WAN Edge List:
 - a. Check that the router's chassis and serial number are in the WAN Edge list.
 - b. Authorize the router by clicking Valid in the Validate column.
 - c. Click Send to Controllers to send the WAN Edge list to the controller devices.
- c From vManage > Configuration > Templates:
 - a. Create a device template for the vEdge router.
 - b. Attach the router to the device template.

D. Initial Configuration

- 2 Connect AC power to the vEdge router:

Plug one end of the power cord all the way into the AC power inlet of the router, and plug the other end into an AC power outlet.

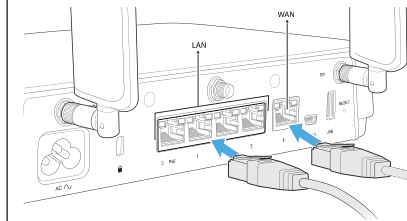


Caution: If you are connecting AC power to the router, it is recommended that the building have an external surge protective device installed.

D. Initial Configuration

- 3 Connect LAN and WAN interfaces:

- a Connect to the LAN by plugging the appropriate cable into any port, except port 4, on the front of the router.
- b Connect to a WAN by plugging the appropriate cable into port 4 on the front of the router.



- 4 Verify vEdge router status:

From vManage > Dashboard, verify that the vEdge router is operational.



Quick Start

vEdge 100WM Router

Package Contents

- Router chassis
- Two multiband dipole antennas
- AC power cord appropriate for your geographical location
- USB console cable
- Wall-mount plate
- Quick Start document

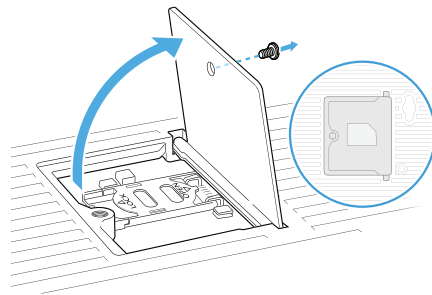
For complete documentation, see https://sdwan-docs.cisco.com/Product_Documentation

Safety Standards

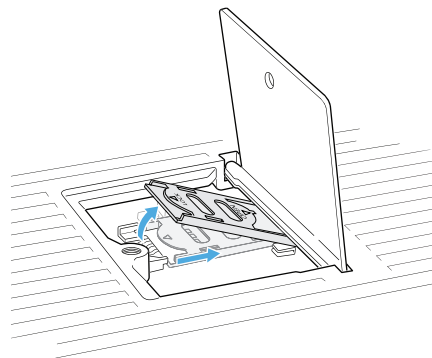
Before installing the routers or connecting it to a power source, read the planning and installation instructions for your hardware platform at: https://sdwan-docs.cisco.com/Product_Documentation/vEdge_Routers
Failure to observe these safety warnings can result in personal injury or death.

A. Install the SIM Card

- 1 Unscrew the socket cover and open it.

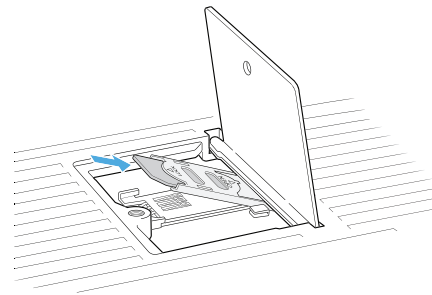


- 2 Slide the SIM card holder cover towards the socket cover hinge and open it.

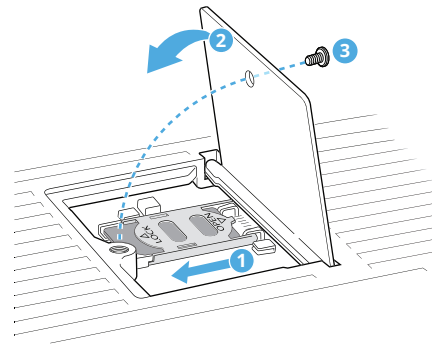


A. Install the SIM Card

- 3 Insert the SIM card firmly into the socket.

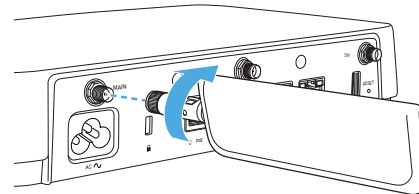


- 4 Close the SIM card holder cover. Then close the socket cover and screw it shut.

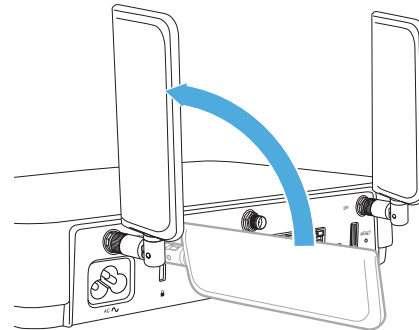


B. Attach the Antennas

- 1 Screw one antenna into the terminal marked MAIN and the other into the terminal marked DIV.

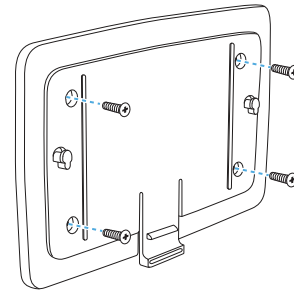


- 2 Turn each antenna so that it is vertical.

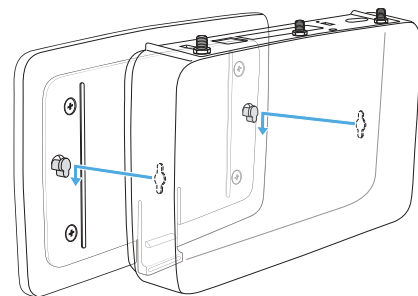


C. Mount the Router on the Wall

- 1 Secure the mounting plate to the wall (screws not provided).



- 2 Align the two slots on the underside of the router chassis to the notches in the mounting plate. Then gently slide the router chassis down onto the notches.



D. Initial Configuration

- 1 Configure the vEdge router:

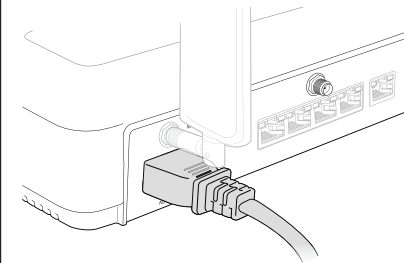
- a From vManage > Configuration Devices > WAN Edge List, upload the WAN Edge authorized serial number file.
- b From vManage > Configuration Certificates > WAN Edge List:
 - i Check that the router's chassis and serial number are in the WAN Edge list.
 - ii Authorize the router by clicking Valid in the Validate column.
 - iii Click Send to Controller to send the WAN Edge list to the controller devices.

- a From vManage > Configuration > Templates:
 - i Create a device template for the vEdge router.
 - ii Attach the router to the device template.

D. Initial Configuration

- 2 Connect AC power to the vEdge router:

Plug one end of the power cord all the way into the AC power inlet of the router, and plug the other end into an AC power outlet.

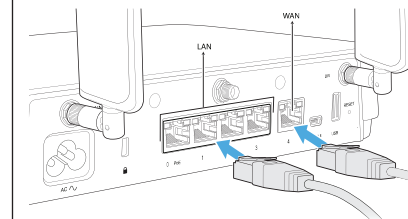


Caution: If you are connecting AC power to the router, it is recommended that the building have an external surge protective device installed.

D. Initial Configuration

- 3 Connect LAN and WAN interfaces:

- a Connect to the LAN by plugging the appropriate cable into any port, except port 4, on the front of the router.
- b Connect to a WAN by plugging the appropriate cable into port 4 on the front of the router.



- 4 Verify vEdge router status:

From vManage > Dashboard, verify that the vEdge router is operational.



vEdge 1000 Router Quick Start

Hardware Installation

Package Contents

- Router chassis
- Mounting ears, Right and Left
- AC power adapters
- AC power cords for your geographical location
- AC power adapters
- USB cable for console
- Mounting-ear screws
- Rack-mount screws
- Quick Start document

For complete documentation, see https://sdwan-docs.cisco.com/Product_Documentation

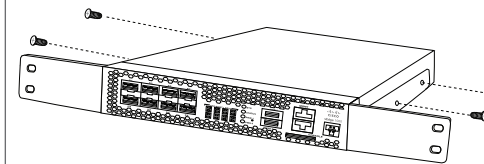
Safety Standards

Before installing the router or connecting it to a power source, read the planning and installation instructions for your hardware platform at: https://sdwan-docs.cisco.com/Product_Documentation/vEdge_Routers

Failure to observe these safety warnings can result in personal injury or death.

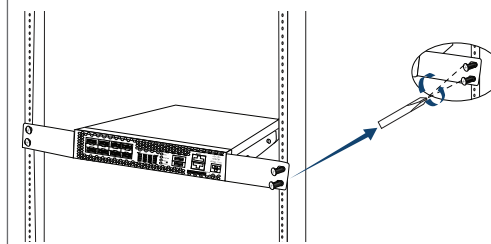
Step 1

Secure the left and right mounting ears to either side of the router chassis using the screws in packet A.



Step 2

Lift and position the router in the rack. Then secure the mounting ears to the rack using the rack-mount screws in packet B.



Initial Configuration

Step 1

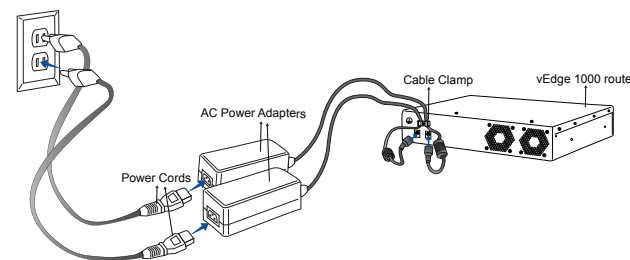
Configure the vEdge router:

- 1 From vManage > Configuration > Devices > WAN Edge List, upload the WAN Edge authorized serial number file.
- 2 From vManage > Configuration > Certificates > WAN Edge List:
 - a. Check that the router's chassis and serial number are in the WAN Edge list.
 - b. Authorize each router by clicking Valid in the Validate column.
 - c. Click Send to Controller to send the WAN Edge list to the controller devices.
- 3 From vManage > Configuration > Templates:
 - a. Create a device template for the vEdge router
 - b. Attach the router to the device template.

Step 2

Connect AC power to the vEdge router:

- 1 Plug one end of the power cord into the AC power supply.
- 2 Plug the other end into the AC power outlet.



! Caution: If you are connecting AC power to the router, it is recommended that the building have an external surge protective device installed.

Step 3

Boot the vEdge router:

- 1 From vManage > Dashboard or from vManage > Network > Device Dashboard, verify that the vEdge router is operational.



Hardware Installation

Package Contents

- Router chassis
- AC power cords for your geographical location
- USB cable for console
- Short mounting ears
- Extended mounting ears
- 1U sliders
- Mounting screws
- Quick Start document

For complete documentation, see https://sdwan-docs.cisco.com/Product_Documentation

Safety Standards

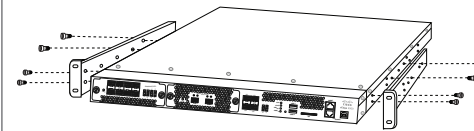
Before installing the router or connecting it to a power source, read the planning and installation instructions for your hardware platform at: https://sdwan-docs.cisco.com/Product_Documentation/vEdge_Routers

Failure to observe these safety warnings can result in personal injury or death.

Two-Post Mount ▶

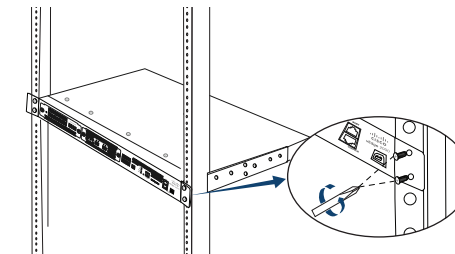
1 Step

Secure the left and right extended ears to either side of the router chassis using the screws in packets B and C.



2 Step

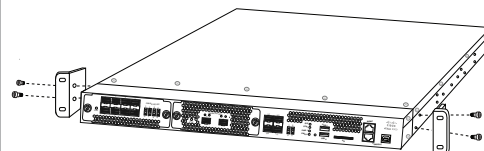
Lift and position the router in the rack. Then secure the mounting ears to the rack using the rack-mount screws in packet A.



Four-Post Mount ▶

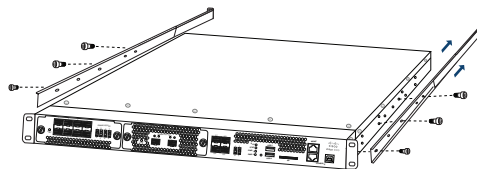
1 Step

Secure the left and right short mounting ears to either side of the router chassis using the screws in packet B.



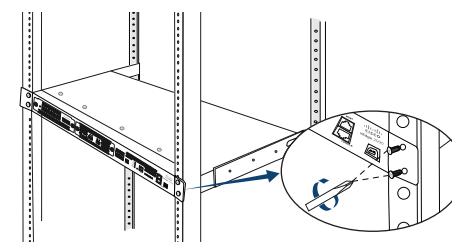
2 Step

Slide out the 1U sliders and secure to either side of the router chassis using the screws in packet D.



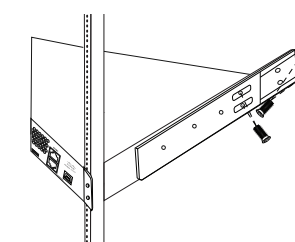
3 Step

Lift and position the router in the rack. Then secure the mounting ears to the front of the rack using the rack-mount screws in packet A.



4 Step

Secure the 1U sliders to the rear post using the rack-mount screws in packet A. Then lock the 1U sliders in place using the screws in packet E.



Initial Configuration

1 Step

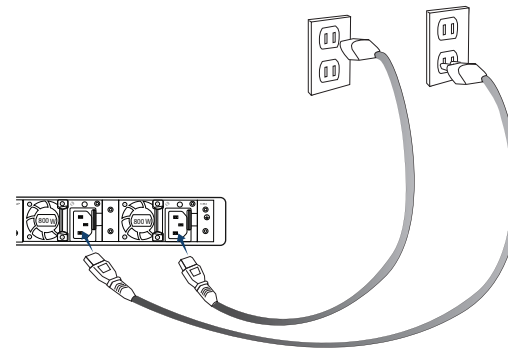
Configure the vEdge router:

- 1 From vManage > Configuration > Devices > WAN Edge List, upload the WAN Edge authorized serial number file.
- 2 From vManage > Configuration > Certificates > WAN Edge List:
 - a. Check that the router's chassis and serial number are in the WAN Edge list.
 - b. Authorize each router by clicking Valid in the Validate column.
 - c. Click Send to Controller to send the WAN Edge list to the controller devices.
- 3 From vManage > Configuration > Templates:
 - a. Create a device template for the vEdge router
 - b. Attach the router to the device template.

2 Step

Connect AC power to the vEdge router:

- 1 Plug one end of the power cord into the AC power supply.
- 2 Plug the other end into the AC power outlet.



! Caution: If you are connecting AC power to the router, it is recommended that the building have an external surge protective device installed.

3 Step

Boot the vEdge router:

- 1 Flip the On/Off switch on the rear of the router to the ON position.
- 2 From vManage > Dashboard or from vManage > Network > Device Dashboard, verify that the vEdge router is operational.

Hardware Installation

Package Contents

- Router chassis
- AC power cords for your geographical location
- RJ-45 to DB-9 console cable
- Rack-mounting ears
- Slide rails
- Mounting screws
- Quick Start document

For complete documentation, see https://sdwan-docs.cisco.com/Product_Documentation

Safety Standards

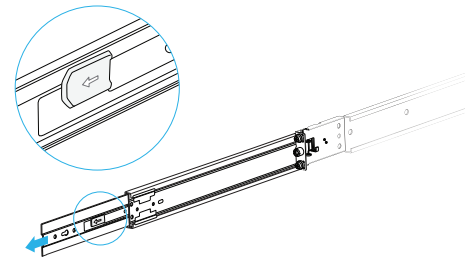
Before installing the router or connecting it to a power source, read the planning and installation instructions at: https://sdwan-docs.cisco.com/Product_Documentation/vEdge_Routers

Failure to observe these safety warnings can result in personal injury or death.

Four-Post Rack Mount ▶

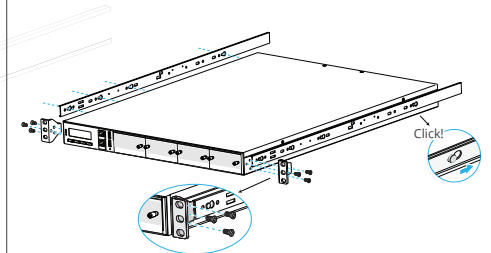
Step 1

Detach both inner rails from the two slide rails. To do so, slide the inner bracket all the way to the end of the slide rail. Then push the slide rail lock outwards in the direction indicated by the arrow.



Step 2

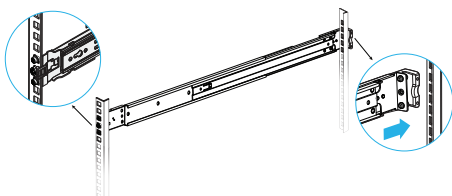
Attach the two inner rails to either side of the router chassis using the ten inner rail screws in the accessory box. Attach the two mounting ears to either side of the router chassis using the six mounting ear screws in the accessory box.



Four-Post Rack Mount ▶

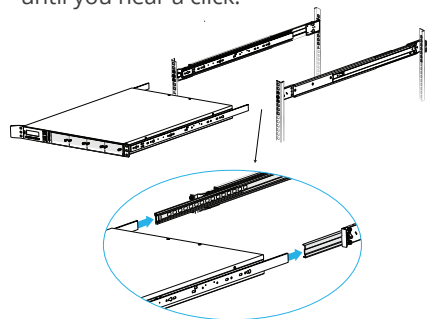
Step 3

Install the two outer rails into the 19-inch rack. To do so, clip the outer rail first to the front and then to the rear post of the rack. Ensure that you align the three holes on either side of the outer rail to the three holes in the front and rear posts of the rack.



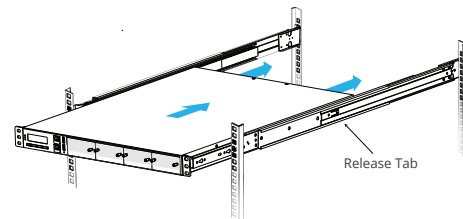
Step 4

Lift and insert the chassis into the outer rails, making sure to align it on both sides, until you hear a click.



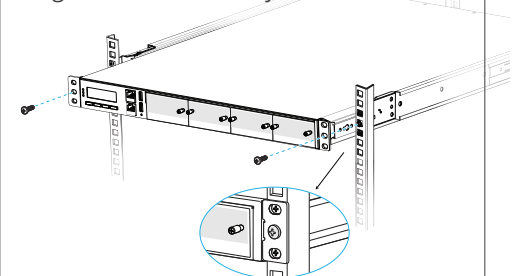
Step 5

Slide the chassis as far back as possible, pushing the release tabs on both the inner rails in the direction shown below.



Step 6

Secure the router to the rack by inserting one screw (provided in the accessory box) into the center hole of each mounting ear. Tighten the screw firmly.



Initial Configuration

Step 1

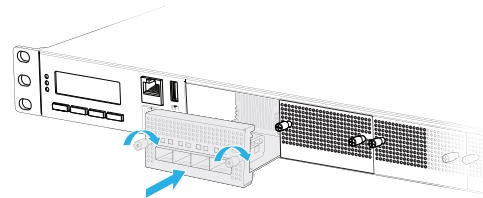
Configure the vEdge router:

- 1 From vManage > Configuration > Devices > WAN Edge List > Upload WAN Edge List, upload the WAN Edge authorized serial number file.
- 2 From vManage > Configuration > Certificates > WAN Edge List:
 - a. Check that the router's chassis and serial number are in the WAN Edge list.
 - b. Authorize each router by clicking Valid in the Validate column.
 - c. Click Send to Controller to send the WAN Edge list to the controller devices.
- 3 From vManage > Configuration > Templates:
 - a. Create a device template for the vEdge router.
 - b. Attach the router to the device template.

Step 2

Insert the NIM modules:

- 1 Install at least one NIM module in any of the four available NIM slots.

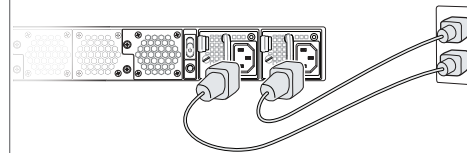


i NOTE: If you power on the router without inserting a NIM module, the ZTP process will not work.

Step 3

Connect AC power to the vEdge router:

- 1 Plug one end of the power cord into the AC power supply.
- 2 Plug the other end into the AC power outlet.



! Caution: If you are connecting AC power to the router, it is recommended that the building have an external surge protective device installed.

Step 4

Boot the vEdge router:

- 1 Flip the On/Off switch on the rear of the router to the ON position.
- 2 From vManage > Dashboard or from vManage > Network > Device Dashboard, verify that the vEdge router is operational.